

PRICE £1.50

OXFORD UNIVERSITY BOAT CLUB

THE EIGHTS

MAY 23rd to MAY 26th 1990



St. John's



St. Peter's



St. Edmund Hall



Trinity



University



Wadham



Wolfson



Worcester



Linacre



Lincoln



Magdalen



Mansfield



Merton



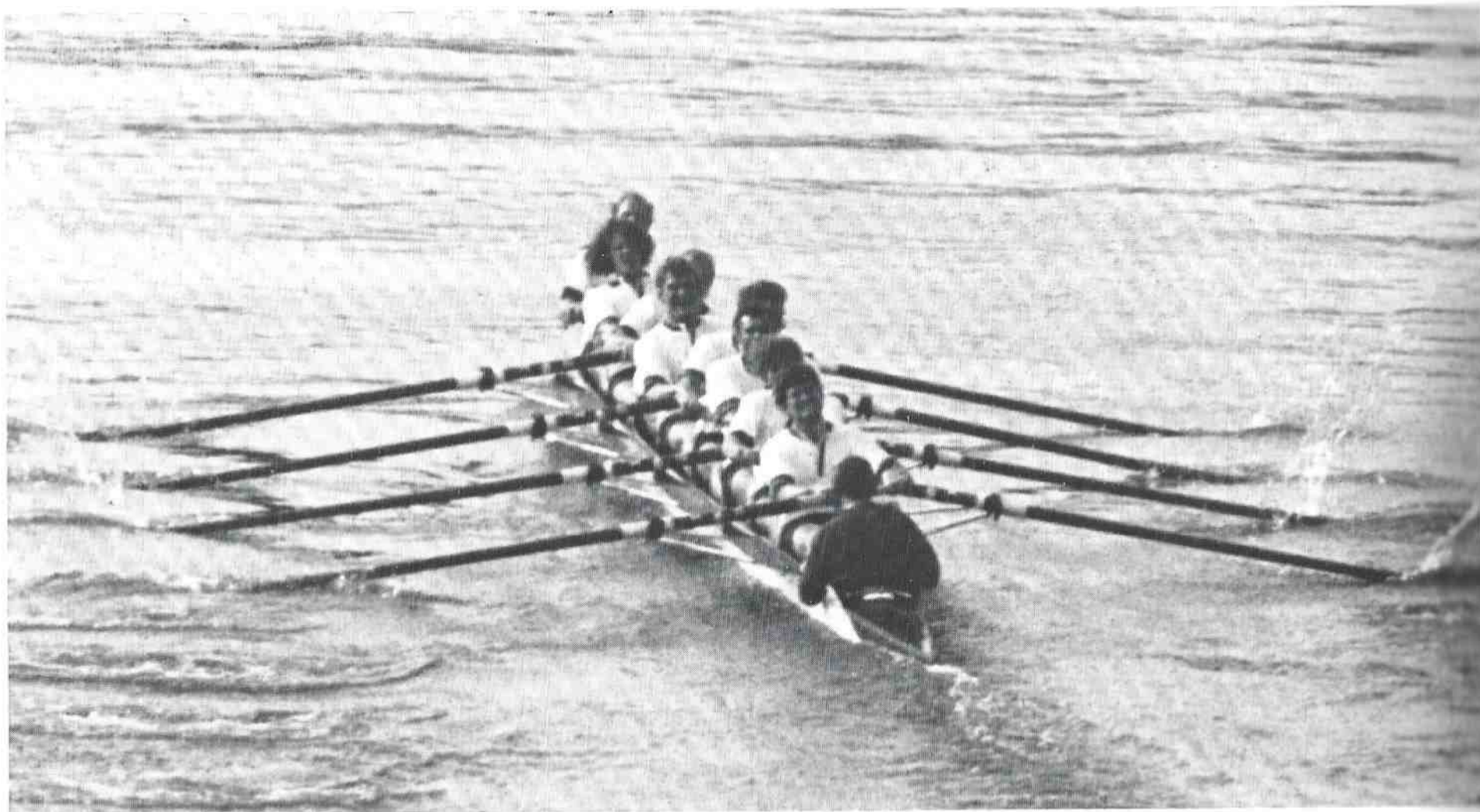
New College



Oriel



Oster House



Blue Boat 1990

Bow TG Slocock (Shrewsbury & St. Johns); 2 RJ Obholzer (Hampton & St. Catherines);
3 DG Miller III (State University New York & University); 4 MC Pinset (Eton & St. Catherines);
5 RA Hull (Robinson College Cambridge & Oriel); 6 CJ Heathcote (Allhallows, Coventry & Jesus);
7 JWC Searle (Hampton & Christchurch) *Stroke* M Gaffney (US Naval Academy & Hertford);
Cox MW Watts (Westminster & Oriel)

THE UNIVERSITY SPECIALISTS

THE FINEST SELECTION OF MENSWEAR IN OXFORD

ACADEMIC GOWNS FOR ALL DEGREES and OCCASIONS FOR SALE OR HIRE DRESS HIRE DEPARTMENT (our own stock – immediate availability) COLLEGE TIES, SCARVES, CAPS, CUFFLINKS, STICK PINS, TIE SLIDES, COLLEGE and UNIVERSITY SWEATSHIRTS, EMBROIDERED OR PRINTED BADGES.

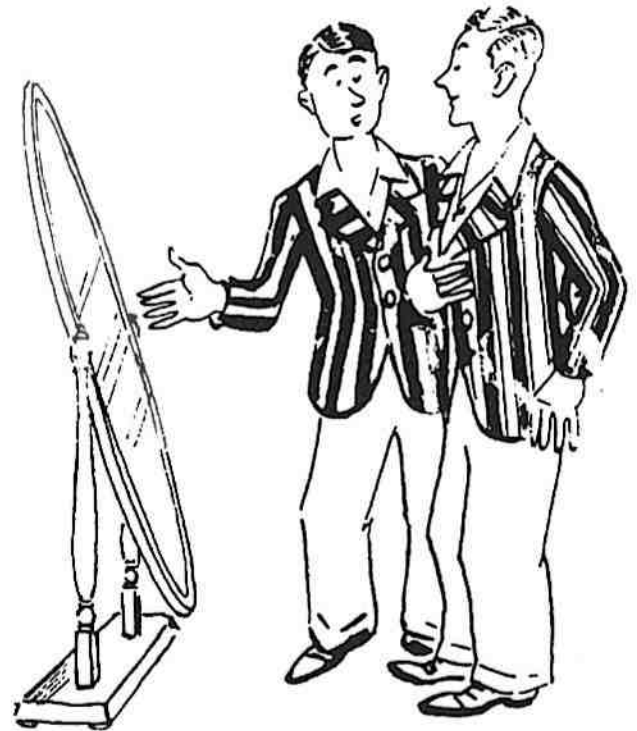
RUGGER JERSEYS, SOCKS, SHORTS, BOOTS, CRICKET CLOTHING & BOOTS NAVY BLAZERS, BOATERS & COLLEGE RIBBONS FOR EIGHTS.

WE ARE ONE OF THE LARGEST STOCKISTS OF BARBOUR WEATHERPROOF COATS

PLEASE ASK US TO QUOTE FOR YOUR SPECIAL TEAM OR CREW SHIRTS WE MAKE SPECIAL BADGES TO ORDER.

TRY US FIRST YOU WILL BE SURPRISED AT OUR STOCK.

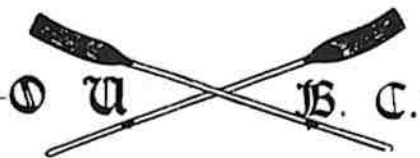
MAIL ORDER AVAILABLE ON ALL TIMES. VISA/ACCESS & AMERICAN EXPRESS CARDS ACCEPTED.



**Shepherd &
Woodward**

109-114 HIGH STREET
OXFORD

TEL: OXFORD 249491



OXFORD UNIVERSITY
BOAT CLUB

Eights Week Programme

MAY 23rd to MAY 26th 1990

RETIRING OFFICERS

President

J.W.C. SEARLE

Vice-President

University Secretary

M.W. WATTS

Hon. Treasurer

DR. J. M. BARRY

Captain of Isis

D. NEARY

College Secretary

S. EYLES

OUWBC President

A. HADFIELD

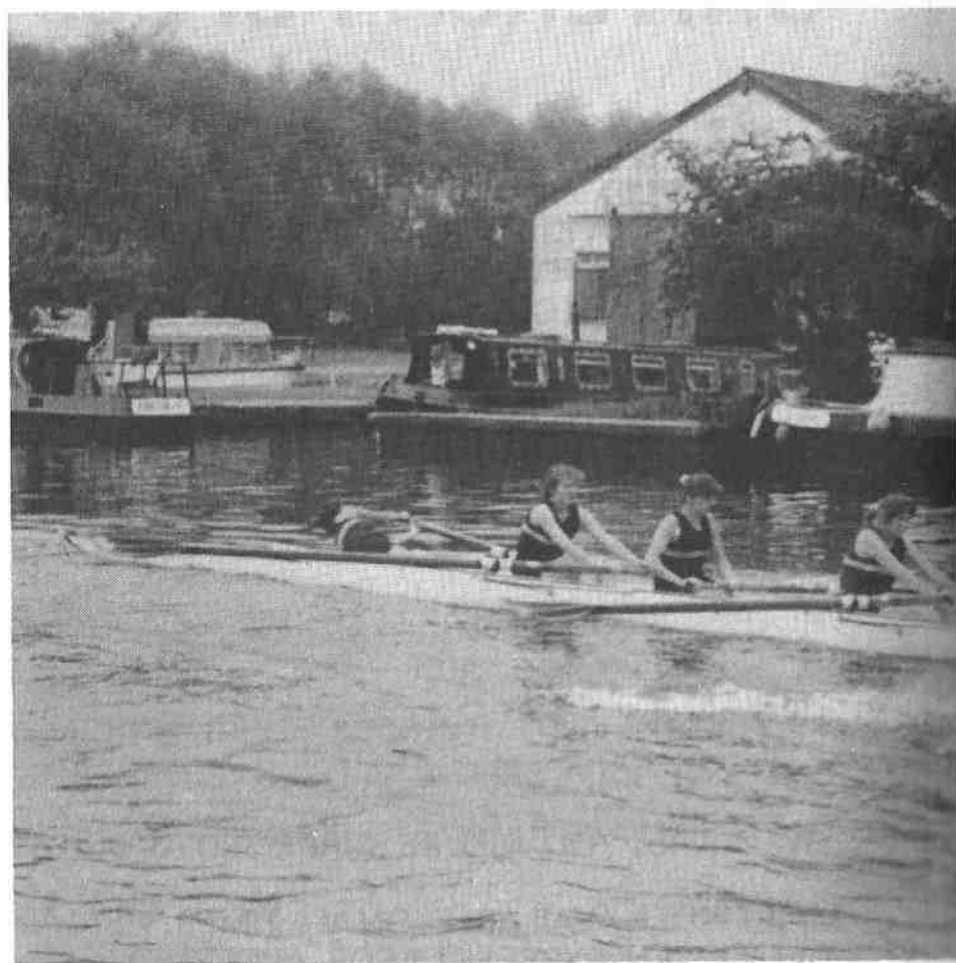
OULRC President

R.A. SAYEED

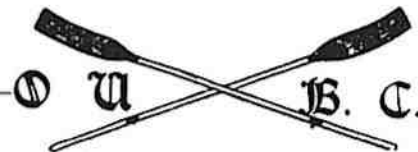
Committee

S. R. ROYLE, S. EYLES

This programme, the tenth in the series begun by Nicholas Conington, was produced by Roland Brown who would like to thank Paul Swaddling, Roz Lawson, Mickey Quinn, Clive Cheesman, Getset Ltd of Eynsham and also BJ Harris Ltd for their kind loan of incidental photographs.



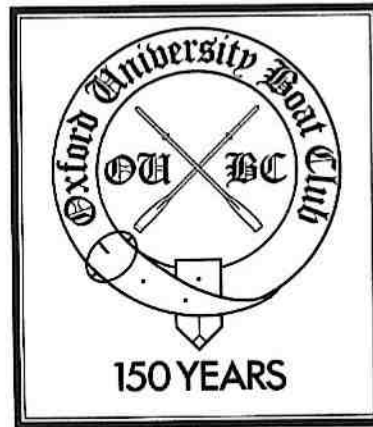
Due to a number of crews not succeeding in "Rowing-on" last Friday, some crews named in this programme may not be rowing in Eights Week.



O.U.B.C. Positions & Committee	2	Lincoln College	33
President's Report	5	Magdalen College	40
O.U.W.B.C. President's Report	7	Mansfield College	42
Summer Eights 1989	9	Merton College	43
Torpids 1990	11	New College	45
O.U.B.C. Ferry Notice	13	Oriel College	46
Article	14	Osler House	49
Oxford University Lightweight 1990	16	Pembroke College	50
Womens Lightweight 1990	17	Regent's Park College	52
Starting Order	34	Somerville College	53
Summer Eights 1976-88	35	St. Anne's College	55
Course Map	36	St. Catherine's College	56
Head of the River from 1815	38	St. Edmund Hall	58
College Crews:		St. Hilda's College	59
Balliol College	18	St. Hugh's College	60
Brasenose College	19	St. John's College	61
Christ Church College	20	St. Peter's College	62
Corpus Christi College	22	Templeton College	63
Exeter College	23	The Queen's College	64
Hertford College	24	Trinity College	65
Jesus College	27	University College	66
Keble College	28	Wadham College	69
Lady Margaret Hall	31	Wolfson College	70
Linacre College	32	Worcester College	71

Eights Week Programme

Contents



THE OUBC APPEAL

For 150 years the OUBC has been the parent body of all rowing at the University. To provide for the needs of the next 150 years the OUBC Trust Fund has mounted a major Appeal to build a rowing centre at the Iffley Road track. This centre will encompass an indoor rowing tank, a gymnasium specially for rowers and a boat house. The facilities will be for the whole university.

For full details, and to make a donation please contact:

MICHAEL PELHAM (TREASURER) OUBC TRUST FUND
52 VICARAGE ROAD, HENLEY ON THAMES, OXFORDSHIRE RG9 1HU
TEL: 0962 882222 (DAY)

In October of last year it was already clear that the OUBC would enjoy an unprecedented depth of experience in both the coaching team and in the oarsmen. Under the direction of Stephen Royle, Pat Sweeney again provided invaluable grounding in technique and fitness during the winter months, while Mike Spracklen stood by to apply his critical eye for the final fortnight on the Tideway. With the return of winning Blues Mike Gaffney and Jonny Searle, backed up by newcomers to the squad World medallists Rupert Obholzer and Matthew Pinset, the atmosphere was one of confidence but with an appreciation that all would depend on the commitment of the coming months.

As with all years there are those who narrowly miss selection, however, this year the standard was unusually high and the final choices especially hard. I would like to take this opportunity to thank all those who trialled, both oarsmen and coxes, those who rowed in the Blue Boat and those who did not, for creating a squad which will stand out for its depth of talent.

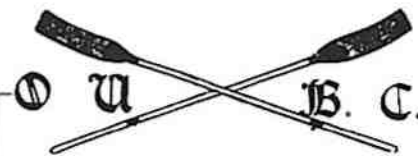
After the January training fortnight on the Tideway and some tense moments back in Wallingford the final crew was selected. Despite the frustrating spell of gale-force winds, which disrupted training during its crucial 'bedding down' stage, we enjoyed some success in our first fixture against Leander Club followed by victories over Notts County and at the Reading Head. University of London were our adversaries in what proved to be the most spectacular fixture prior to the race. Led off the start by almost a length London soon drew away and were able to take our water. However, the crew was unruffled and gradually pulled back. With the London crew rapidly tiring they refused to give way as we closed and the race ended in collision. Although resultless the race taught us some valuable lessons and demonstrated the speed the boat was capable of achieving.

Mike Spracklen returned from his new home in Canada to coach for the final two weeks. The main enemies at this stage seemed to be overconfidence and an obsession with the weigh-in. Isis meanwhile had performed well against Nottingham County and Leader Club. They had come in second to the Blue Boat at the Reading Head, beating Cambridge into third, and had won Kingston Head in a record time.

On the day of their race Isis were dropped off the start and Goldie led them by eight seconds at Hammersmith. As a crew they dug into their deepest reserves of courage and started to claw back. By Chiswick Steps they had pushed Goldie to exhaustion and had overlapped them. With characteristic Oxford determination they pushed on through and took the lead. As Isis began to draw away there was a clash of blades and the umpire was given no option but disqualification as the Goldie two man had lost his oar. Particularly worthy of note are the efforts of Tim Branfitt in bringing the crew together, Richard Thorpe and Cal Maclenan, the two 1989 winning Blues, who rowed at stoke and five.

The Blue Boat's race was comparatively unremarkable. We expected Cambridge to lead from the start but rowed through them fairly early on, thus the race was effectively over after about three minutes. We went on to win by 2½ lengths in a time of 17 minutes 15 seconds. We did not row as well as we were capable but perhaps we didn't really have to. Racing is not about margins of victory but about winning. As long as Cambridge are happy to come in a gallant second then I'm sure we are happy to win.

Thanks for the year to John Pilgrim-Morris, Steve Royle, Tim Bramfitt, Fred Smallhouse, Pat Sweeny, Cliff Smedly and Mike Spracklen.



President's Report

JONNY SEARLE
Retiring President



CAMPAIGN FOR
OXFORD

'It is in the hope and belief that Oxford can be endowed so as to hold its rightful place as one of the premier universities of the world that we have launched the five-year Campaign for Oxford, with a target of £220 million'

the Vice-Chancellor, Sir Patrick Neill

**Supporting
Campaign for Oxford
is an
Investment in the Future**

**Oxford University Development Office, Oxenford House, Magdalen Street, Oxford OX1 3AB.
Telephone: (0865) 278111 Fax: (0865) 278139.**

The year started well with four Oxford boats appearing at the Fours Head of the River race for the first time in a few years and taking the senior three pennant. We were also represented at Marlow where we took the senior one, senior three and novice pennants.

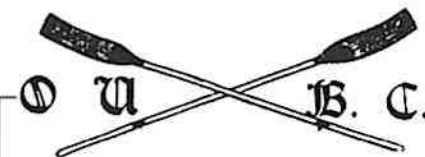
After a Christmas training camp at Kingston we were invited to compete as an eight against a Kingston crew to set up a new world record for indoor rowing. As victors in the contest an Oxford University Women's Boat Club crew are at present world record holders for 2500m indoor rowing.

During the crucial period after selection training was severely hampered by first gale force winds and then flooding which made the river unrowable, whilst Cambridge missed a single outing due to fog. We moved to the Tideway and were looked after very well by the University of London Boat Club.

We had a number of matches between the Blue Boat and other London clubs, UL, Thames Tradesmen and Thames Rowing Club, all of which we won. This was encouraging since The Tradesmen had defeated Cambridge and Thames were to do so before we raced.

The 3rd March saw an exceptionally good day for the Reading Head in which both the Oxford crews were entered. The Blue Boat had a good row, and went on to win the event by 27 seconds clear of the next crew, which was University of London. Orlis were a 36 seconds behind, two seconds in front of the lightweights.

The day of the race finally arrived, with strong wind blowing in from the Arctic. The morning snow and hail had stopped by the race in the afternoon but conditions were still squally. Osiris raced first and after taking a lead at the start were overhauled after about four minutes and never regained the lead. The Blue Boat went off very fast at the start and in spite of being hit by a squall in the first few strokes got an early lead of about two thirds of a length. This did not increase however and anxiety crept in. The rating edged back up and so did Cambridge. Coming to the barrier Cambridge started to edge past and Oxford ran into dead water. Oxford never got back on terms and were defeated. This was a disappointing end to what had otherwise been a successful year but next year's squad have the experiences of a settled year and some positive results to build on.



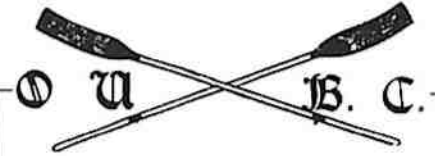
Oxford University Women's Boat Club

ANDREA HADFIELD
President



Osler House Summer Eight (1989)

*Bow Mel Blake; 2 Susie Thomas; 3 Katy Jeffrey; 4 Katie Smith; 5 Nikki Jackson; 6 Julie Ghetley; 7 Jo Gurney;
Stroke Helen Cocker; Cox Ian Comaish.*



Summer Eights 1989

Eights Week 1989 saw extremes of weather conditions; the first day was halted for over an hour by a torrential downpour, while later days enjoyed much bright sunshine. **Oriel** retained the headship with a highly experienced but little practiced crew – the final line up trained only a handful of times before racing. The head crew was weakened by the loss of Terry Dillon to international duties on Friday and Saturday but the same could be said of **Christ Church**, who lost Jonny Searle, and were further handicapped by their valuable boat being, in the words of *The Daily Telegraph*, “undendearingly demolished” in a collision with **Oriel** during Friday’s warm up. Despite this drama there were no bumps in the top five places.

Lower down the 1st Division **Hertford’s** rise of recent years was halted by rapid bumps from **St. John’s** and **Balliol**. **St. John’s** were impressive throughout gaining four good bumps to carry them to sixth place.

In the 2nd Division **Jesus** and **Brasenose** rose strongly. The former won their blades whilst the latter failed only narrowly to enter the 1st Division – closing to less than a canvas behind **Wadham** on the final evening whilst rowing as sandwich boat.

The women’s headship was held by **Osler House** rowing in a distinctive short, sharp, attacking style. **Wadham’s** challenge looked strong, bumping **St. Hugh’s** and **Somerville** on the first two days. However in two races from second place they failed to make a significant impression on the leaders. **St. Hugh’s** looked a weak crew and, starting third, fell four places.

A strong **University** crew entered the 1st Division and won their blades with four impressively early bumps. They replaced **St. Hugh’s II** who fell 6 places to complete a sad week for the college.

The quality of racing was high this year despite the lack of change near the top of the orders. Lower down excitement in the form of bumps, and even a sinking, was plentiful.



Oriel College 1st Torpid 1990

*Bow T.J. Knight; 2 S.N. Oakland; 3 N.O. Stevenson; 4 P.P. Swaddling; 5 J.P. Hodges; 6 N.J. Hirst; 7 J.J.C. Leyne;
Stroke M.N. Rivers Cox G.S. Radcliffe*

Whatever one might have expected of this year's competition, it was a turn-up for the book. **New College** had prophetically adorned Donnington Bridge with their colours over Christmas, confident of taking the headship from its place in the hands of **Oriel**; although their eventual lot was not a happy one. If the term's floods were not so remarkable considering 1976 had seen the competition cancelled due to a swollen Isis, the eventual format Torpids took was still unprecedented. Torrential rain saw the Isis closed for much of the term forcing the more stalwart crews to train elsewhere and definitely not anywhere on the Thames above Teddington Lock. O.U.R.C. passed a rule that, when the Thames water put the river on red alert, the penalty for rowing would be four technical bumps again that colleges first boat; incentive enough for the rule to be obeyed!

In the event, the state of the Isis was such that we lost the first two days racing and in terms of the divisions, all but the mens' first and second divisions and an informal women's race. In the mens' first division, Friday saw **Oriel** row over head some five lengths clear of **New College** who had succumbed to **Christ Church** in front of the boathouses. In fact, **Brasenose** had closed to within 1/4 of a length of **Christ Church** in the gut but their challenge faded allowing the house time to bump. No one doubted the speed of **Brasenose** off the start but this showing raised again questions as to their staying power over the second half of the course. Lower down in the division. **Oriel II**, tipped by many to be destined to an ever downward plunge, caught **Hertford** easily to go fifth. Meanwhile **Keble**, tragically unlucky, lost a blade and dropped out of the division.

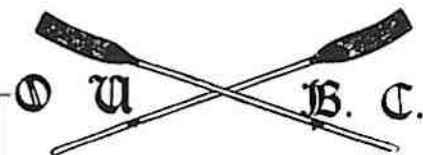
In the second division, **Pembroke** and **Lincoln** initiated their productive two days by bumping **Trinity** and **Wadham** respectively.

On Saturday **Oriel** rowed over ahead of **Christ Church** without difficulty to retain the Headship for the 19th consecutive year. **Brasenose** caught **New College** at the top of the Greenbank. **Oriel II** rowed over in fifth place and **Balliol** bumped **St. Catharines** to go seventh.

In the second division **Lincoln** built on Fridays efforts by bumping **Trinity** but **Pembroke**, by rowing as sandwich boat, bumped twice to return to the first division.

The informal women's races sufficed to demonstrate that **Osler House** were still the rightful head crew - **Somerville** having made little impression on either day.

It only remains to be hoped that less hostile weather in 1991 will allow a full programme of racing and that this years dearth of Torpids rowing will not affect the standard of this Summer's rowing to any great extent.



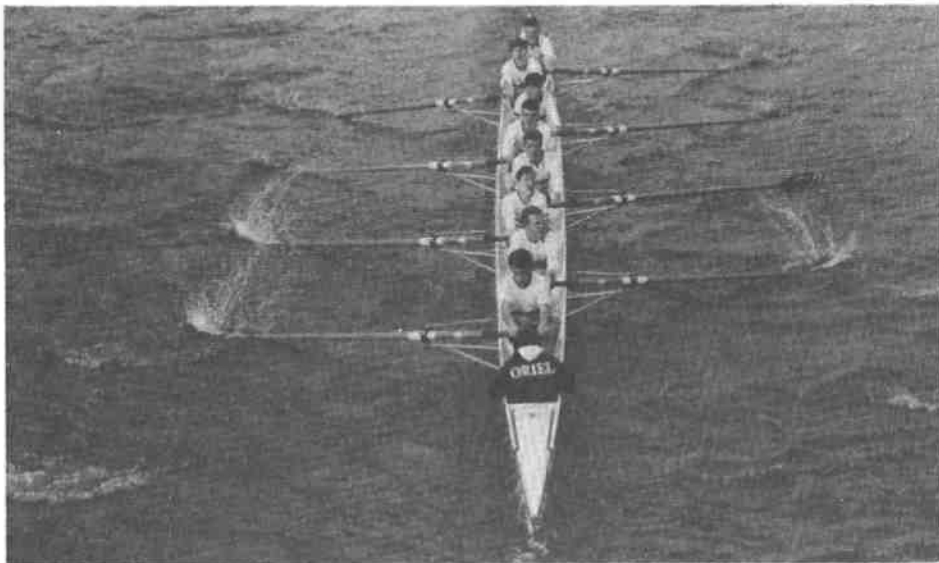
Torpids 1990



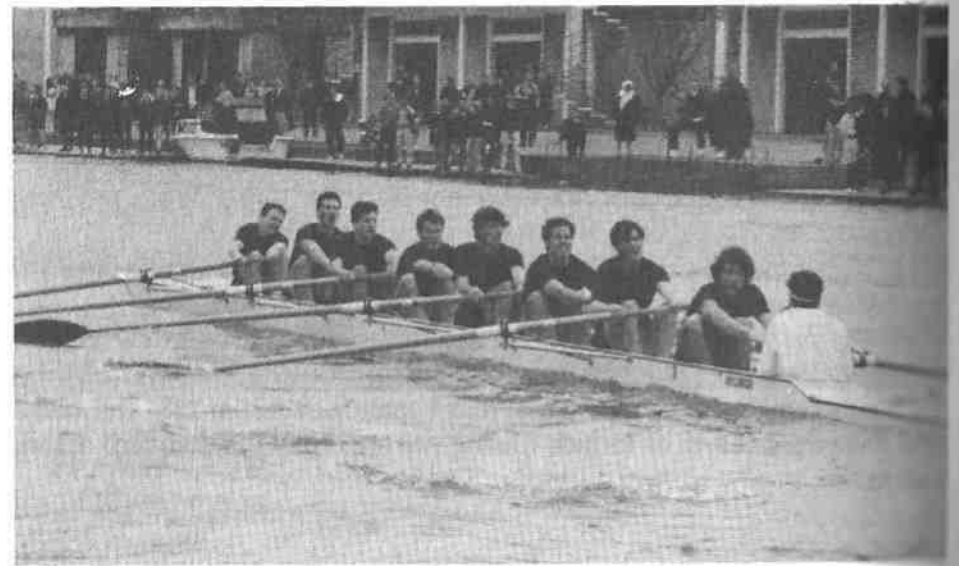
Osler I



Brasenose I



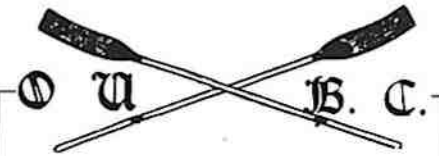
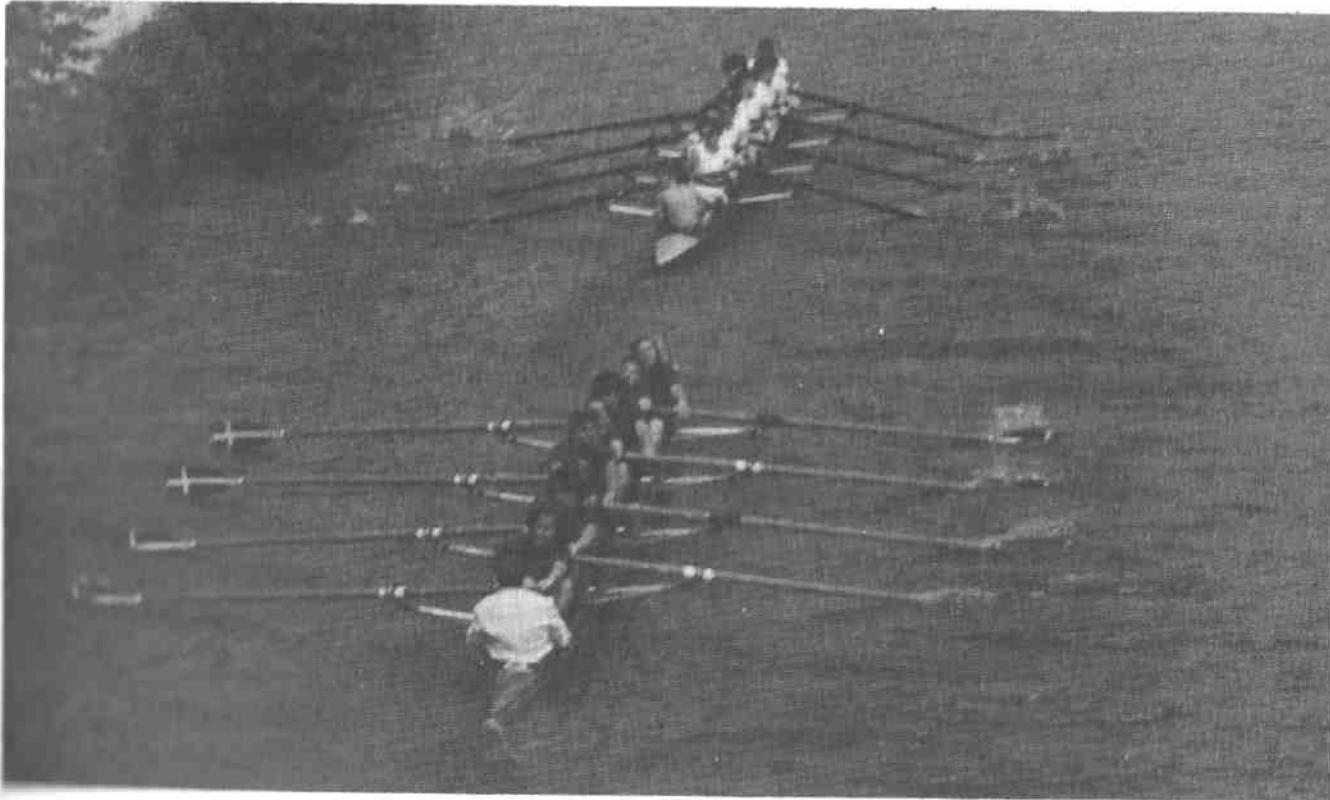
Oriel II



Christchurch I

OUBC Ferry

Between divisions, the OUBC will operate a ferry from the OUBC boat house to the lower end of the college boat houses, on each night of Eights from 11.30 am until 20 minutes after the First Division has finished (or later if by agreement with the ferryman). The use of the ferry is restricted to college crews, those assisting college boat clubs and those authorized by the OUBC officers. No alcohol may be carried on the ferry. Coxes are asked to look out for the ferry and to row lightly if necessary when near it. No one may operate the ferry except those authorized by the OUBC.



OUBC Ferry Notice

A Proud Year for St. Chad's

BY CLIVE CHEESMAN

As will be known to many of our readers, St. Chad's College Boat Club celebrates its sesquicentenary this year. Nestling amidst the proud spires of central Oxford, this small but proud college upholds all the noble traditions of work and play: and the proudest part of the college is undoubtedly the Boat Club, ever striving after still nobler and prouder prizes, a task well within its capabilities.

The exact origins of the club are lost in the mists of time, but tradition relates that George Arbuthnot Kronwright played a central role in organizing the first crew from Chad's, before taking the cloth and becoming the famous "rowing bishop" of Tongoland, where he taught the natives those moral imperatives, a quick catch and a clean finish. His crew in the 1840 Summer Eights was affectionately known as "Kronwright's Complete Pansies", the colourful phrase doubtless indicating some impressive quality in the vernacular of the time. Their average weight was 9st 6, a far cry from today's Chaddian crews, who in some years push up towards the 11st mark.

The late 1880s was really the golden period for St. Chad's, when the college 1st Boat came under the coaching of Major E.P. French-Carver, late of the Duffs, resplendent in the pink socks and tie of the Financial Times Staff Cricket Club. Fresh from years of service in the hills of Tongoland, he brought new ideas and invigorating methods, as all who strained under his whiplash tongue and constant cry of "You're rowing like fuzzy-wuzzies, damn you" well remember. "Anyone who rowed like a fuzzy-wuzzy had to go away and shoot himself in the head," recalls Mr E.J. Finchley-Strawson from his rest home in Lytham St. Anne's: "I did, three times. Power of good it did me too." "Oh aye, they wuz panthers in them days they wuz," confirms Bert Cackhand, college boatman at the time.

It was in 1904, however, that the college reached its zenith

in terms of university representation. The 1st VIII cox, E.P. French-Carver jun. (no relation) was selected to cox the University boat, and actually did so for a few days until his tragic death from severe bruising: it appears that through no fault of his own he had steered the crew onto the shore at Putney, and the contusions to the head and upper body were a direct and tragic result. In the same year, however, three other members of the college 1st crew won their Blues, in hockey, real tennis and pelota respectively, thus making it a bumper year.

It was inevitable that after such a high spot, St. Chad's rowing should take a turn for the worse. Doubters may claim that the "quiet spell" has gone on a trifle too long already, but they should remember the proud and noble word of the old song, sung at countless St. Chad's bump suppers over the years:

It'll all go well, if your catch sounds like a bell;

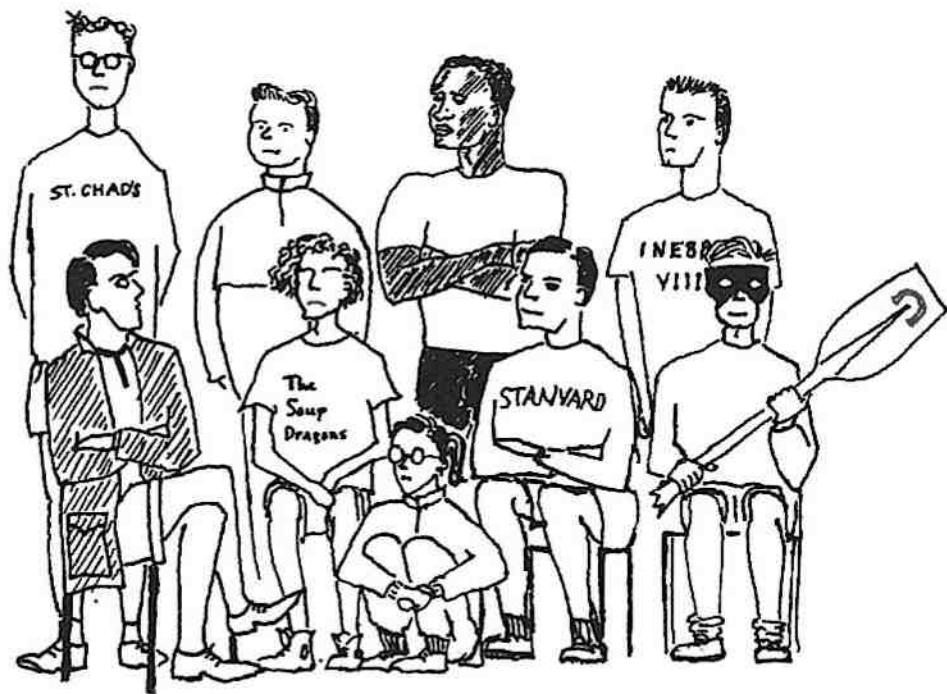
It'll all be alright, if your finishes stay tight:

It'll all go fine, if you really make that extra bit of effort to get in more or less on time.

But St. Chad's moves with the times. The old-fashioned and distinctly chauvinistic cry of "Come on you chaps from Chadders" has been replaced by the simple chant of "Chaaaaa-ad", sung on a descending semi-tone. This new call neatly combines tongue-in-cheek reference to the songs of other, better known, boat clubs, with the egalitarian phenomenon of undergraduates pretending to be football fans. It is also easier to pick up than the old song, which sometimes caused problems for freshers.

And so to the future. One thing is certain: there will always be a St. Chad's. And if, dear reader, you doubt this, just look around you during Eights Week.

THE PROUD INHERITORS OF THIS NOBLE TRADITION
(St. Chad's 2nd VIII 1990)



BACK ROW, 2. to r.

Actually my cybernetics thesis is going very well

I've got to be back in time to serve in Hall

Oh look my cat's being clamped

I don't know much about rowing but I hate Oriel

FRONT ROW, 1. to r.

I rowed at school, you know (Mumblestead Regatta 1988, crabbed out badly)

For some reason the crew likes my haircut this term

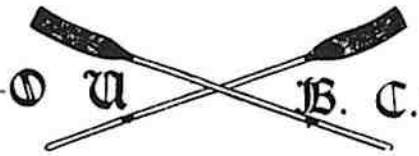
I just know I'm going to mess it all up

Oxford is a really great school

Who is that masked rower?

*A Proud Year
for St. Chad's*

BY CLIVE CHEESMAN



Lightweights 1990

RANA SAYEED
Oriel
Retiring President

Although the crew did not enter any Head Races this season, they gained racing experience against the top college crews such as Oriel and Christ Church, and fixtures with Henley, Upper Thames, and Reading Rowing Clubs were also arranged in the run-up to the race. For the final week before the race, the squad moved to Henley, to become familiar with the course and the rowing conditions.

The final week of training went well and the crew were confident of their chances against Cambridge. On Race Day, however, in spite of an exemplary warm-up, rough conditions at the start unsettled the crew, and by the time the crew had recovered its rhythm Cambridge were already ahead by just over a length, and managed to pull even further ahead to win by four and three-quarter lengths.

Prospects for next year are encouraging in spite of this year's defeat, with several of this year's VIII back in residence and keen to race again; the incoming President is Luke Howard (Christ Church) who is already boating crews for this summer, so any oarsmen or coxes interested in trialling next year should contact him soon.

At this stage it just remains for me to thank Mick Brind for all his coaching and advice throughout the year, Mark Pottle for arranging the land training, Chris Morgan for his help with all matters concerning boats, and Nephys for all their support and encouragement.

Trials kicked-off in 0th week of Michlemas with a three bridges run (the results of which bore no reflection in the final line up). Outlings on the Isis showed the standard of triallists to be high and this was continued throughout training.

With over 40 people trialling the squad was quickly cut to 24. Three boats remained on the Isis until after the Lightweight Regatta when there was a further cut to 20 and we moved to Godstow. Land training was now well established, for the first time under the watchful eyes of a professional coach. Training intensified, culminating in 9th week with a Trial Eights Race. This was won in record time, reflecting the high standard and commitment of the squad. We went down eagerly looking forward to a Christmas of dieting and land-training.

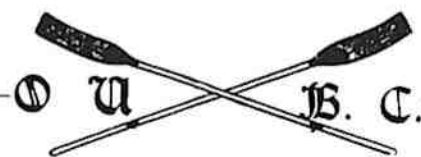
16 were invited to return on 0th week. Under duress the coaches cut to 10 in 1st week to allow people to return to their college boats. After a tense week the crew was announced and the hard work began accompanied by the storms. During the floods we travelled to Coate Water Park, the Tideway, Iffley Gym Erg Room & Temple Cowley Sauna! The weather limited our opportunities for race experience, we could only attend the Reading Head. Our winning senior 3 time also beat the winners of senior 2 (can we have our medals please?) Oxford had a successful day which was further enhanced by the debut appearance of the infamous OUBC flowery all-in-ones seen shortly afterwards on the women's lightweights at the Henley training camp (many thanks Chris et al).

Side by side experience was gained by training with Oxford Poly, the Women's Blue Boat, Osiris, St. Edward's School Colts and Christ Church 1st men, frequently giving the latter a run for their money!

A week before the race we moved to Henley, gaining some experience of the race course, though in retrospect this was insufficient. Perhaps, in future, more time should be spent at Henley in the weeks leading up to the race.

In the tradition of the Henley Boat Races, conditions on the day were appalling. Winning the toss we chose the Bucks Station. We had a unsettled start, not finding our rhythm until Remenham. Cambridge were $\frac{3}{4}$ of a length ahead, we pushed and gained some ground but they responded well and carried on to win the race by $2\frac{1}{4}$ lengths. Natrually we were all very disappointed with the result but decided we must use the experience and learn from our mistakes to form the basis of a strong squad for next year – making sure we are one step ahead of Cambridge.

Many thanks to all who supported us through training especially Rod Andrews, Mike Rosewell, Phil Holey & Chris Morgan. In the mean time good luck to everybody racing in Eights.



Women's Lightweights 1990

CATHY DAVIS
Retiring President



Balliol College

Boat Club Captain
LUCY GUEST

Men's 1st VIII Captain
ANDREW OVEY

Bosun
PETE MILLAR

Secretary
CHRIS ALEXANDER

Social Secretary
RORY POPE

FIRST EIGHT (M)

Bow Julian Allen
2 Paul Thomas
3 Carl Garland
4 Jonathan Bradley
5 Dave Pearson
6 Damian Clearly
7 Andrew Ovey
Stroke Rob Young
Cox Rory Pope
Coach David Hardy

SECOND EIGHT (M)

Bow Simon Jackson
2 Dave Arthur
3 Rupert Angel
4 Mike Richmond
5 Joe Carey
6 Ed Welsh
7 Dave Lewis
Stroke Price Kerfout
Cox Adrian Bird
Coaches Ignacio
Jim Crossley

THIRD EIGHT (M)

Bow Paul Nix
2 Charles Bailie
3 Ian Fox
4 Peter Scott
5 Anthony Kinghorn
6 Alistair Fernie
7 Paddy McGowan
Stroke Steve Cotter
Cox Sarah Mitchell
Coaches Jason Hubbert
Arthur Moore

FOURTH EIGHT (M)

Bow Richard Farrar
2 Alex Duncan
3 Luke Farrar
4 Tom Mitchell
5 Ralph Warnsley
6 Graeme Browne
7 Simon Analue
Stroke Adam Joy
Cox Jeremy Burchardt
Coach Mick Richmond

FIFTH EIGHT (M)

Bow Mark Nottley
2 Andy Leale
3 Steve Dorman
4 George Bryant
5 Adrian Lewis
6 Lucian Roberts
7 Angus Foley
Stroke Mathew Hooper
Cox Claire Parlett
Coaches Peter Scott
Mike Richmond

FIRST EIGHT (W)

Bow Debbie Sauin
2 Sarah Hicks
3 Lisa Cundall
4 Jane Kirkpatrick
5 Maraha Findley
6 Anne Buckley
7 Bethany Gibbs
Stroke Lucy Guest
Cox Sam Garner
Coaches Paul Thomas
Jim Crossley

SECOND EIGHT (W)

Bow Jemi Ferdunbar
2 Emma Welton
3 Carolyne Pearce
4 Sam Garner
5 Joy Dykers
6 Maaike Liebert
7 Lucy Harrison
Stroke Suzanne Irving
Cox Georgia Carillo
Coach Anne Buckley

FIRST EIGHT (M)
Bow Peter Askew
 2 Jan Brzeski
 3 Rob Butcher
 4 Simon Martin
 5 Craig Lightbody
 6 Tim Whitaker
 7 Doug Long
Stroke Simon Godwin
Cox Dave Horner
Coaches H. Bashcarat
 J. Hawkins

SECOND EIGHT (M)
Bow Andy Priest
 2 J.C. Rozendaal
 3 Phil Robinson
 4 Kent Bressie
 5 John Hayes
 6 Patrick Irwin
 7 Ben Lankester
Stroke Mike Buchanan
Cox Wendy Lippmann
Coach P. Askew et al

THIRD EIGHT (M)
Bow Ben Bell
 2 Chris Wilkes
 3 Pete Carmichael
 4 Rupert Blakeley
 5 Tom Kilroy
 6 Kris Kobach
 7 Doug Fraley
Stroke Rick Hadfield
Cox Philippa Hamilton

FOURTH EIGHT (M)
Bow Craig Grassman
 2 Greg Faucette
 3 Ben Faircloth
 4 Chris Lawson
 5 Andrew Dwley
 6 Robert Mason
 7 Don Maclead
Stroke Chad Shirley
Cox James Kennedy

FIRST EIGHT (W)
Bow Liz Rice
 2 Helen Davies
 3 Jane Fear
 4 Jane Sillery
 5 Karen Houghton
 6 Polly Fordham
 7 Andrea Hadfield
Stroke Kath Cross
Cox Mark Caines
Coach H. Bashaarat

SECOND EIGHT (W)
Bow Vicky Markonitz
 2 Ebru Timurkon
 3 Kate Rainbird
 4 Helen Weeds
 5 Victoria Fea
 6 Sheila Gall
 7 Sarah Walsh
Stroke Karen Ball
Cox Antonia Cavendish
Coach P. Fordham

THIRD EIGHT (W)
Bow Jackie Spurrier
 2 Sally Bennett
 3 Amanda Holland
 4 Sarah-Jane Walsh
 5 Catherine Evans
 6 Kath Brain
 7 Chandrika Deshpande
Stroke Judith Green
Cox Deirdre Collins
Coach P. Fordham



Brasenose College

Boat Club Captain
 PETE ASKEW

Ladies' Captain
 POLLY FORDHAM

Secretary
 CRAIG LIGHTBODY



Christ Church College

Boat Club Captain
B.P.J. SPIERS

Ladies' Captain
K. WELLESLEY

President
J.W.C. SEARLE

Treasurer
N. BOHM

Secretary
G. HILL

FIRST EIGHT (M)

Bow M. Drake
2 J.I. Treadwell
3 L. Howard
4 S.C. Williams
5 S.C. Coleman
6 B.P.J. Spiers
7 A.G. Ferguson
Stroke G.J. Cardinale
Cox J. Ison
Coach M.J. Rosewell

SECOND EIGHT (M)

Bow S. Fletcher
2 D. Bond
3 T. Wolfenden
4 M. Markopolous
5 T. de Trafford
6 B. O'Halloran
7 M. Harwood
Stroke L. Chappell
Cox G. Harriss
Coach S.C. Williams

THIRD EIGHT (M)

Bow R. Spedding
2 S. Corbin
3 B. Maton
4 M. Banks
5 T. Sykes
6 T. Viesulas
7 B. Badcock
Stroke E. Harriss
Cox J. Bray
Coach N. Bohm

FOURTH EIGHT (M)

Bow R. Curtis
2 J. Waters
3 D. Winiker
4 M. Manetta
5 G. Morriss
6 C. Ford
7 S. Brien
Stroke J. Bruce
Cox D. Soloman
Coach T. Wolfenden

FIFTH EIGHT (M)

Bow S. Crewe
2 M. Nicholson
3 C. Percival
4 B. Dures
5 J. McCullough
6 A. Roberts
7 J. Murrin
Stroke J. Clarke
Cox N. Green
Coach S. Fletcher

SIXTH EIGHT (M)

Bow I. Ross
2 N. Huddleston
3 G. Webb
4 P. Fegan
5 A. Mitichell
6 D. Mansfield
7 T. Church
Stroke N. Dibley
Cox S. Teague
Coach N. Bohm

SEVENTH EIGHT (M)

Bow Hughie
2 James
3 Jim
4 Mark
5 Ali
6 Harry
7 Smutty
Stroke May
Cox Jo
Coach Dog-man

EIGHTH EIGHT (M)

Bow M. Davies
2 S. Thorne
3 A. Harrison
4 A. Allsopp
5 M. Broad
6 J. Lawrence
7 K. Street
Stroke B. Nicholson
Cox J. Hyde
Coach D. Bond



Christ Church College

Boat Club Captain
B.P.J. SPIERS

Ladies' Captain
K. WELLESLEY

President
J.W.C. SEARLE

Treasurer
N. BOHM

Secretary
G. HILL

FIRST EIGHT (W)

Bow S. Quick
2 K. Wellesley
3 J. Hyde
4 S. Eltis
5 N. Bohm
6 C. Nicholls
7 J. Bray
Stroke A. Bannon
Cox V. Baum
Coach M. Drake

FOURTH EIGHT (W)

Bow R. Curtis
2 J. Waters
3 D. Winiker
4 M. Manetta
5 G. Morriss
6 C. Ford
7 S. Brien
Stroke J. Bruce
Cox D. Soloman
Coach T. Wolfenden

SECOND EIGHT (W)

Bow C. Goford
2 F. McDonald
3 F. Matthews
4 A. Tucker
5 A. Höller
6 K. Malton
7 C. Eley
Stroke E. Boyce
Cox D. Solomon
Coach M. Harwood

THIRD EIGHT (W)

Bow E. Kendall
2 K. McCarthy
3 R. Chee
4 C. Harris
5 N. Ballinger
6 J. Rogers
7 C. Sibson
Stroke K. Hansen
Cox J. Bourne
Coach C. Egerton-Warburton



Corpus Christi College

Captain
ERNIE BOEHM

Ladies' Captain
CLARE MILLARD

Mens Secretary
JEREMY TILL

Ladies' Secretary
FIONA BELLIS

FIRST EIGHT (M)

Bow J. Kraunsoe
2 J. Uealey
3 M. Olavesen
4 J. Kingston
5 C. Noon
6 E. Boehm
7 A. Asquita
Stroke R. Lipscombe
Cox F. Bellis
Coaches A. Fowler
R. Evans

SECOND EIGHT (M)

Bow T. German
2 M. Froggatt
3 R. de Barcugrave
4 D. Bain
5 T. Storey
6 J. Gilbert
7 D. Symons
Stroke J. Till
Cox D. Haslam
Coaches M. Olavesen
C. Noon
E. Boehm

THIRD EIGHT (M)

Bow A. Odwell
2 P. Stacey
3 B. Erman
4 N. Uassall
5 N. Suggatt
6 D. Aeberuard
7 A. Lapsley
Stroke P. Asupole
Cox G. Parker
Coach C. Noon

FIRST EIGHT (W)

Bow S. Bahar
2 K. Robertson
3 E. Pridie
4 S. McDowell
5 N. Pavey
6 S. Wasserman
7 E. Ramsey
Stroke M. Schulte
Cox C. Smith
Coaches C. Millard
J. Kingston

SECOND EIGHT (W)

Bow J. DeSilva
2 E. McCarty
3 E. Potter
4 N. Berridge
5 C. Weeks
6 P. Novelli
7 J. Lewis
Stroke S. Kinsey
Cox J. Bruden
Coaches D. Bain
C. Millard

FIRST EIGHT (M)
Bow Mike Jones
 2 Doug McCowen
 3 Al Campbell
 4 Pat Kirkby
 5 Steve Todd
 6 Paul Lincoln
 7 James Connelly
Stroke Ivan Garel-Jones
Cox Jackson Collins

FOURTH EIGHT (M)
Bow J. Davies
 2 Hugh Fraser
 3 A. Hatson
 4 Richard Dudley
 5 S. Enright
 6 Simon Rowley
 7 Nick George
Stroke David Pearce
Cox R. Piddle
Coach Vicky Capstick

FIRST EIGHT (W)
Bow Kate Owers
 2 Linda B.
 3 Vicky Capstick
 4 G. Pelham
 5 Claire Eeles
 6 Rachel Falconer
 7 Jane Desnoyers
Stroke Elane Ball
Cox Tim
Coach Adrian

SECOND EIGHT (M)
Bow Steve Kookes
 2 J. Humpries
 3 Garri Hendell
 4 Jason Sapsin
 5 Ed Bush
 6 Steve Dixon
 7 Mark Vanstone
Stroke Simon Edwards
Cox Claire Waldren
Coaches Dr. Pettersen
 Chris Ball

SECOND EIGHT (W)
Bow Laura Johnson
 2 Sarah Williams
 3 K. Hansen
 4 Sarah Whitten
 5 Sue Nichelson
 6 A. Fernandez
 7 Gill Bullock
Stroke Anna Dronzek
Cox Steph Wilde

THIRD EIGHT (M)
Bow John Mulreany
 2 S. Damji
 3 N. Killeen
 4 N. Lyle
 5 Rob Pohl
 6 R. Richards
 7 B. Hoylman
Stroke D. Lingham
Cox Roy Cox
Coaches Dan "The Man"
 Cammerman
 Roberta Levy



Exeter College

Boat Club Captain
 HIS MAGNIFICENCE
 JACKSON COLLINS

Ladies' Captain
 VICKY CAPSTICK

Mere Secretary
 THE HUMBLE GARRI HENDELL

Ladies' Secretary
 GILL BULLOCK

Treasurer
 MARK VANSTONE

Ladies' Treasurer
 MADELEINE PRICE



Hertford College

Men's Captain
JAMES SHARPE

Vice-Captain
MIKE DOYLE

Ladies' Captain
ANNE TIPPING

Ladies' Vice-Captain
RO DOE

Boatman
JIMBO RONALDSON

President
MARK GREENBERG

Treasurer
INGA PARRY

Secretary
ALISON STEVENS

Members
EMMA PEARSON, JOHN MILLAR,
KIRSTY RIDYARD

FIRST EIGHT (M)

Bow Jo Flmeing
2 Alex Sen-Gupta
3 Gareth Dunn
4 Jan Heuvels
5 Andy Dodd
6 Matt Tulley
7 Eric Beste
Stroke James Sharpe
Cox Füsun Sevgen
Coaches Roger Batty
Ray Ward
Paul Brown-Kenyon

SECOND EIGHT (M)

Bow John Crandon
2 Ian Lownes
3 Paul Belt
4 Mark Kim
5 Richard Swallow
6 Donny Brown
7 Tony Aidah
Stroke John Miller
Cox Inga Parry
Coaches James Sharpe
Rob Keys

THIRD EIGHT (M)

Bow Eric Tozzi
2 Angus Reid
3 Tommy 6ft Simpson
4 Brian Wells
5 Nick Cotter
6 Richard Lugg
7 Andrew Longmere
Stroke Simon Taylor
Cox Tina Williams
Coach Jan Heuvels

FOURTH EIGHT (M)

"Rugby"
Bow Colin Edmonds
2 Vincent Nairac
3 Tim Gould
4 Brad Revells
5 Rob Keys
6 Alex Nairac
7 Stuart Whitham
Stroke Hamish Binns
Cox Vernee Samuels
Coach Ro Doe

FIFTH EIGHT (M)

"Schools"
Bow Gideon Henderson
2 Vardhan Rajbumer
3 Paul Brown-Kenyon
4 Mark Mayhew
5 Mark Hutton
6 Simon Hewlett
7 Roger Wilkinson
Stroke Paul Gleeson
Cox Fiona Plearin

SIXTH EIGHT (M)

"Novice"
Bow Jan Edwards
2 John Steel
3 Nick Stokes
4 Chris Wartie
5 Simon Mealer
6 Paul Smith
7 Bruce Breckenridge
Stroke Julian Van-Wimmersburg
Cox Cathy 'Flower' Smith
Coach Donny Brown

FIRST EIGHT (W)

Bow Amanda Jones
2 Alison Stevens
3 Anne Tipping
4 Shelly Renton
5 Louise Crave
6 Elizabeth Johnson
7 Lucinda Birkle
Stroke Kirsty Ridyard
Cox Dave Ferrier
Coaches Sean Ringsted
Paul Brown-Kanyon
Rana Sayeed

SECOND EIGHT (W)

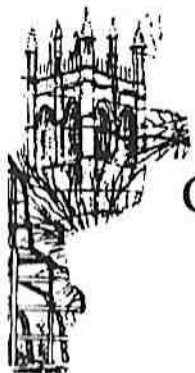
Bow Jo Wilson
2 Vikki Cadman
3 Claudia Jay
4 Rachel Cutcliffe
5 Mari
6 Rose Else-Mitchell
7 Denise Whitaker
Stroke Soo Hutchinson
Cox Jessica Waywell
Coaches Emma Pearson
Chris Williams
Paul Belt

W. P. HINE AND CO

EST 1830

Town & Country Menswear

52 High Street
Oxford OX2 42663



College Wraps, Ties,
Sweatshirts,
Pullovers.

Christy Boaters, Panama Hats
Single or Double Breasted Blazers

White Boating Blazers in stock with or
without club trim. Special orders taken
and quantity discount to clubs available.

THIRD EIGHT (W)

"Novice"

- Bow* Jo Biggs
2 Charlotte Hogg
3 Sally Brett
4 Maureen McLane
5 Gretcken Greene
6 Arabella McGaigan
7 Lisa Day

Stroke Sheila Kerr

Cox Bahi Ghubril

Coaches Alison Stevens

Kirsty Ridyard

Anne Hodgetts



Hertford College

Men's Captain
JAMES SHARPE

Vice-Captain
MIKE DOYLE

Ladies' Captain
ANNE TIPPING

Ladies' Vice-Captain
RO DOE

Boatman
JIMBO RONALDSON

President
MARK GREENBERG

Treasurer
INGA PARRY

Secretary
ALISON STEVENS

Members
EMMA PEARSON, JOHN MILLAR,
KIRSTY RIDYARD

Godfrey

**GO FOR GOLD IN
GODFREY GEAR!**

'ROWSPORTS'



ROWING RAINTOP

Specially developed for rowing in water repellent fabric, features include a thermal fleecy lining in the extra-long back. Stretch shoulder vents to allow for ease of movement whilst rowing. Fabric front panel, and back vents allow the body to breathe. Concealed hood in collar and extra long sleeves. Available in club colours with printing or embroidery.

Similarly adapted top and trousers for coaches, and coxes.



ALL IN ONE LYCRA/ROWING SUITS

Designed especially for rowers in the latest fabric - stretch Lycra. For racing - vests in club colours with matching or contrast shorts - double panelled front and back.



TRAINING KIT

For training we have some outrageous colour schemes to choose from. Lycra shorts and vests separately available, also for winter training suits with long legs and/or long sleeves.

DESIGNERS & MANUFACTURERS OF SPECIALIST ROWING CLOTHING

For details contact Judith Godfrey on 0602 864600
or call at our factory

GODFREY TEXTILES
Mundella Works, Mundella Road, The Meadows,
Nottingham NG2 2EQ.
Telephone: 0602 864600

FIRST EIGHT (M)
Bow Ben Schmizzhe
 2 Stuart King
 3 Steve Lord
 4 Richard Geering
 5 Richard Shirley
 6 Chris Heathcote
 7 Simon Kennedy
Stroke Tomaso Ceccarelli
Cox Matthew Lawson
Coaches Jon Carley
 Colin Mitchell
 Donald Rydings

SECOND EIGHT (M)
Bow Paul Bartlett
 2 Jon Price
 3 Gerallt Jones
 4 Paul Hughes
 5 Jes Hansen
 6 Tim Thomas
 7 Pete Sinden
Stroke Gwyn Tyley
Cox Clare Pover
Coach Simon Kennedy

THIRD EIGHT (M)
Bow Simon Broadhurst
 2 Martin Cross
 3 Gary Lewis
 4 Paul Western
 5 Martin Cullen
 6 Dave Elledge
 7 Lucas Bateman
Stroke Craig Street
Cox Julia Adamson
Coach Steve Coppell

FIRST EIGHT (W)
Bow Laya Medawar
 2 Charlie Fletcher
 3 Maya Matthews
 4 Emma Collingwood
 5 Nancy Levenson
 6 Caroline Wilkinson
 7 Catherine Hawkins
Stroke Sarah Davies
Cox Claire Hartley
Coach Jonathon Price

SECOND EIGHT (W)
Bow Sarah Warren
 2 Catrin Gruffyd-Jones
 3 Juliet Southworth
 4 Rachel Goodhart
 5 Louise Jackson
 6 Nina Liddle
 7 Estelle Grafton
Stroke Liz Cross
Cox Vicky Adams
Coach Tomaso Ceccarelli



Jesus College

Boat Club Captain
 SIMON KENNEDY

Vice-Captain
 RICHARD SHIRLEY

Ladies' Captain
 EMMA COLLINGWOOD

Ladies' Vice-Captain
 CAROLINE WILKINSON

Boatman
 PETER BOWLEY

Treasurer
 TOMASO CECCARELLI

Steward
 CHARLIE FLETCHER



Keble College

Boat Club Captain
NICK BAYNES

Ladies' Captain
MARY GLEDHILL

Ladies' Vice-Captain
EMMA JAMES

Boatman
PETER BOWLEY

Treasurer
PAUL BUCKWORTH

Secretaries
KEVIN BLATCHER
BEN DAVIS

FIRST EIGHT (M)

Bow Dave Hopkinson
2 Jon Greenwood
3 Peter Slade
4 Ben Davis
5 Ian Hooper
6 Kevin Blatcher
7 Nick Baynes
Stroke Mike Kuimelis
Cox Julian Wright
Coach Roger Blackwell

SECOND EIGHT (M)

Bow T. Povey
2 N. White
3 R. Gunton
4 A. Phillipson
5 P. Donovan
6 J. Greenwood
7 T. Salter
Stroke N. McAndrew
Cox Dean Rubley
Coach Ben Davis

THIRD EIGHT (M)

Bow J. Eklund
2 C. Robinson
3 P. Neal
4 L. Chaminade
5 M. Oldridge
6 P. Kelly
7 M. Dymott
Stroke S. Preston
Cox R. Hawtin
Coach Nick Baynes

FOURTH EIGHT (M)

"Schools"
Bow Karen Clarke
2 Pat Irwin
3 Tom Hardcastle
4 Colin Mather
5 Stuart Easton
6 Paul Buckworth
7 Ian McLean
Stroke Andy Beale
Cox Andy Cook
Coach Kate Lancaster

FIFTH EIGHT (M)

"Susan"
Bow S. Hegarty
2 A. Msimang
3 P. Hawkes
4 J. Griffiths
5 M. Thompson
6 M. Denman
7 I. Colak-Antic
Stroke J. Worrall
Cox K. Jones
Coach Flashleye Garpe

SIXTH EIGHT (M)

"La Bonne Huite"
Bow A. Feast
2 M. Smith
3 E. Khan
4 O. Lewis
5 R. Fernando
6 J. White
7 I. Jones
Stroke C. Collis
Cox J. Wintle

SEVENTH EIGHT (M)

"Coxes"
Bow Boatbasher French
2 Helen Goliath
3 Jen
4 Neckola Toilet
5 Razzle
6 Julian Write
7 Chipper
Stroke J
Cox Kev Blatcher
Coach Ben Davis

EIGHTH EIGHT (M)

"Ratzenburg 64"
Bow D.H. Maskery
2 J.G. Squaddie
3 P.T. Sweetie
4 B.G. Wholeshabang
5 I.H. Peavitt
6 K.B. Daley
7 Captain Martmite
Stroke M.K. Babyeater
Cox J.W. Inches
Coach Captain America

NINTH EIGHT (M)

"Vesper 64"
Bow K. Special
2 N. Urine
3 O. Rocky
4 B. Slim
5 B. Yee-Ha
6 E. Bucketworth
7 R. Billy
Stroke S. Deadpan
Cox A. Northerphismo
Coach Hawaii Five-Rowe

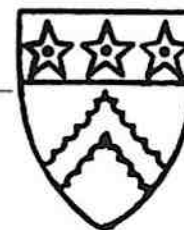
FIRST EIGHT (W)
Bow Sadie Maskery
 2 Helen Peavitt
 3 Jenny Lawton
 4 Emma Bailey
 5 Mary Gledhill
 6 Alison Lloyd
 7 Carrie Wittmer
Stroke Emma James
Cox Andy Hill
Coaches Susan Erb
 Susannah Knight

SECOND EIGHT (W)
Bow Carol Jefkins
 2 Kate Mullan
 3 Kyla Evans
 4 Julie Johnson
 5 Rachel Matthews
 6 Janet Wilson
 7 Jo Chevely
Stroke Ros McCallum
Cox Nikki French
Coach Mary Gledhill

THIRD EIGHT (W)
Bow Jenny Leonard
 2 Celeste George
 3 Leah Burton
 4 'Julz'
 5 Zena Esplin
 6 Carole Choulet
 7 Anna Forrest-Hay
Stroke Niki Neill
Cox Helen Sansom
Coach Emma James

FOURTH EIGHT (W)
 "Dairy"
Bow S.M. Hopkinson
 2 H.P. Sauce
 3 J.L. Muscles
 4 Bigger E
 5 M.G. Von-Hot
 6 Ronald Atkinson
 7 Little C
Stroke Big E
Cox A.H. Geek
Coach Ian Hooper

FIFTH EIGHT (W)
 "The Fun Crew"
Bow Mary Ann Lehmkuhle
 2 Helen Duckett
 3 Davina Manship
 4 Samantha Clemshaw
 5 Clodagh Brett
 6 Emma Jones
 7 Fleur May
Stroke Juliet Cornford
Cox Trevor Lane
Coach John Eklund



Keble College

Boat Club Captain
 NICK BAYNES

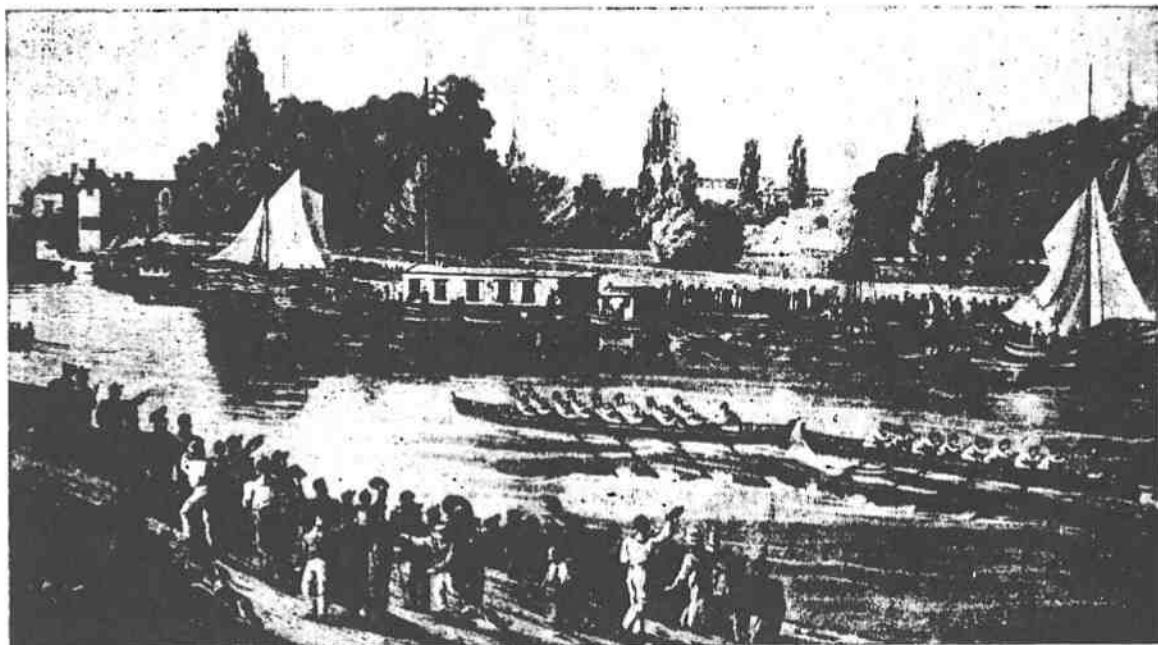
Ladies' Captain
 MARY GLEDHILL

Ladies' Vice-Captain
 EMMA JAMES

Boatman
 PETER BOWLEY

Treasurer
 PAUL BUCKWORTH

Secretaries
 KEVIN BLATCHER
 BEN DAVIS



The Disputed Bump

In 1822 there arose "some little confusion of opinion as to the winner after a race between the B.N.C. and Jesus: a bump had taken place, owing to a crab that had occurred, which for a time delayed the B.N.C., but the race resulted in the B.N.C. coming in first."

(C. C. Knollys)

There can be no dispute or 'confusion of opinion' when it comes to a matter of

**CLUB COLOURS
FROM**

CASTELLS OF THE BROAD

EST 1846 TEL 244000

SUPPLIERS OF ROWING VESTS, BLAZERS, SCARVES, CLUB TIES ETC.

FIRST EIGHT (M)
Bow Neil Marsden
 2 Aidan Burton
 3 David Butler
 4 Paul Toon
 5 Ian Morrison
 6 Roland Martin
 7 Murray Waldron
Stroke Rob Bates
Cox Hilary Norris
Coach Chris Morgan

SECOND EIGHT (M)
Bow Kevin Lumb
 2 Richard Littlehailes
 3 Steve Parnell
 4 Jeff Hunt
 5 Vincent Smith
 6 Andy Kitchin
 7 Justin Smith
Stroke Nick Simpson
Cox Charmian May
Coaches Pete Tang
 Simon Kiddle

THIRD EIGHT (M)
Bow Andrew Hallin
 2 Soondra Appavoo
 3 Joe Boulter
 4 Jay Jay Soares
 5 Rhys Thomas
 6 Duncan Hannah
 7 David Farwell
Stroke Ian Nash
Cox Aidan Hansell
Coach Cath Hawkins

FIRST EIGHT (W)
Bow Louise Ahier
 2 Leena Bramall
 3 Alison Butler
 4 Helen Bradburn
 5 Nicola McDonald
 6 Noel Hild
 7 Claire Pirie
Stroke Hannah Denham
Cox Lisa Fairbrother
Coach Steve Walker

SECOND EIGHT (W)
Bow Jenny Banks
 2 Kate Done
 3 Ros Horner
 4 Sue Gourlay
 5 Katy Weston
 6 Jenny Mason
 7 Sophie Barratt
Stroke Katharine Thomas
Cox Jason Beeley
Coaches Dave Mcnamara
 Joe Billington

THIRD EIGHT (W)
Bow Beryl Jones
 2 Gladys Jones
 3 Mabel Jones
 4 Gracie Jones
 5 Ginger Jones
 6 Edna Jones
 7 Eileen Jones
Stroke Mildred Jones
Cox Edith Jones
Coach Indiana Jones



Lady Margaret Hall

Boat Club Captain
PAUL TOON

Capt' Coxes
JULIA STRAUSS

Ladies' Captain
HANNAH DENHAM

Boatman
GERRY MEAD

Treasurer
YVONNE SHERRY

Secretary
PETE TANG



Linacre College

Men's Captain
DAVE GAUAGHAN

Ladies' Captain
CLARE EVERETT

President
LISALENA OPAS

Treasurer
JOSHI FUJISHIMA

Secretary
CATHERINE ROBERTS

FIRST EIGHT (M)

Bow John McCarthy
2 David Pemberton
3 Hans Van Lewinski
4 Yoshi Fujishima
5 Andy Hayfield
6 Nils Christofferson
7 Steven Hodgkinson
Stroke Dave Gauaghan
Cox Catherine Roberts
Coaches Richard Whites
Tim Newson
Marcus von Krosigk
Jas Machi

SECOND EIGHT (M)

Bow Andrea Coviscascole
2 Paul Elosegui
3 Guilio Ecchia
4 Marc Rands
5 Dan Howard
6 Jason Cooke
7 Mark Yong
Stroke Paul Wesson
Cox Sue Thornewel
Coaches David Pemberton
Tony Hague
YoshFujisha
Dave Gauaghan

FIRST EIGHT (W)

Bow Maria Quibley
2 Kim Polereen
3 Lori-Ann Foley
4 Louise Rix
5 Lucy Harrison
6 Manjit Bodarai
7 Clare Everett
Stroke Caroline Hayes
Cox Andy "Big Cox" Mayfield
Coaches David Pemberton
Lisalena Opas
Andrew McLean-Inglis
Maddy Dunning
Lynne Whitehead

SECOND EIGHT (W)

Bow Clare Bardon
2 Claire Helman
3 Chenchen Liou
4 Jayne Devlin
5 Fiona McDonald
6 Andrea Cravihno
7 Sue Thornewell
Stroke Catherine Roberts
Cox Joshi Fujishima
Coaches Clare Everett
Maria Quigley
Lucy Harrison
Lisalena Opas
Kim Polgreen

FIRST EIGHT (M)

Bow Dan Wood
 2 Hari Sabharwal
 3 Justin Abbott
 4 Nick Chalmers
 5 Gareth Parker
 6 Charles Berry
 7 Jon Claridge
Stroke Neil Townsend
Cox Rod Morton
Coach Steve Walker

SECOND EIGHT (M)

Bow Simon Pennington
 2 Peter Billington
 3 Alex Guy
 4 Pat Brown
 5 Richard Jackson
 6 Aidan Vine
 7 Justin Fox
Stroke Neal Mercer
Cox Samir Shah
Coaches Bill Maclyn
 Marc Howe
 Pete Lindsey

THIRD EIGHT (M)

Bow M. Latthe
 2 J. Tigg
 3 G. Hobby
 4 M. Weber
 5 J. Senior
 6 J. Grossman
 7 M. Regnier
Stroke P. Hawke-Smith
Cox D. Bell

FOURTH EIGHT (M)

Bow Paul Hilsley
 2 Lawrence Pollard
 3 Steve Martin
 4 Mark Bowman
 5 Robert Purvis
 6 Nick Rawlinson
 7 Pete Lindsey
Stroke Martin Burice
Cox Richard Hunter

FIRST EIGHT (W)

Bow Premila Jesudason
 2 Michelle Toner
 3 Karen Exell
 4 Nicola Barker
 5 Tamsin Dodd
 6 Alison Hitch
 7 Janice Heinekey
Stroke Kate Harrison
Cox Dave Jehan
Coach Delia Kempley

SECOND EIGHT (W)

Bow Claire Gosney
 2 Melissa Bailey
 3 Gail Cobley
 4 Miranda Dodd
 5 Gaynor Voice
 6 Courtney Merritt
 7 Sophie Bridges
Stroke Judi Wilson
Cox Paul Dale
Coaches Jon Claridge
 Neal Mercer
 Pete Lindsey



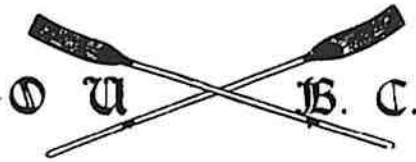
Lincoln College

Mens' Captain
GARETH PARKER

Ladies' Captain
NICOLA BARKER

Secretary
NEIL TOWNSEND

Treasurer
MIKE REGNIER



Starting Order

EIGHTS WEEK 1990

DIVISION TIMES

WV	11.25
MIX	12.00
MVIII	12.35
WIV	1.10
MVII	1.45
MVI	2.20
WIII	2.55
MV	3.30
MIV	4.00
WII	4.30
MIII	5.00
MII	5.30
WI	6.00
MI	6.30

**Rowing On Division
The starting order for the last three men's and women's divisions is determined by Rowing On, which took place last Friday.*

MENS DIV I (6.30)

- 1 Oriel
- 2 New College
- 3 University
- 4 Christ Church
- 5 S.E.H.
- 6 St. John's
- 7 Worcester
- 8 Pembroke
- 9 Keble
- 10 Balliol
- 11 Hertford
- 12 Wadham

MENS DIV II (5.30)

- 1 Brasenose
- 2 Magdalen
- 3 St. Catherine's
- 4 Jesus
- 5 Lincoln
- 6 Oriel II
- 7 Trinity
- 8 New College II
- 9 Wolfson
- 10 Queen's
- 11 St. Peter's
- 12 University II

MENS DIV III (5.00)

- 1 Exeter
- 2 Corpus Christi
- 3 L.M.H.
- 4 Osler House
- 5 Christ Church II
- 6 Merton
- 7 Hertford II
- 8 Worcester II
- 9 S.E.H. II
- 10 Balliol II
- 11 Oriel III
- 12 St. Annes

MENS DIV IV (4.00)

- 1 Mansfield
- 2 St. John's II
- 3 Brasenose II
- 4 Keble II
- 5 Lincoln II
- 6 Linacre
- 7 St. Catherine's II
- 8 Brasenose II
- 9 Wadham II
- 10 Exeter II
- 11 Queen's II
- 12 Osler House

MENS DIV V (3.30)

- 1 Jesus II
- 2 Magdalen II
- 3 New College III
- 4 Trinity II
- 5 University III
- 6 Worcester III
- 7 Wolfsen II
- 8 Keble III
- 9 Balliol III
- 10 Christ Church III
- 11 St. Peter's II
- 12 Merton II

MENS DIV VI (2.20)

- 1 S.E.H. III
- 2 Exeter III
- 3 University IV
- 4 Merton III
- 5 St. Catherine's III
- 6 L.M.H. II
- 7 Hertford III
- 8 Lincoln III
- 9 Pembroke III
- 10 Oriel IV
- 11 Oriel V
- 12 Keble IV

*MENS DIV VII (1.45)

- 1 New College IV
- 2 Corpus Christi II
- 3 Christ Church IV
- 4 St. Anne's II
- 5 St. John's III
- 6 Brasenose III
- 7 Queen's III
- 8 Hertford IV
- 9 Wadham III
- 10 L.M.H. III
- 11 Templeton
- 12 St. Catherine's IV

*MENS DIV VIII (12.35)

- 1 Mansfield II
- 2 Worcester IV
- 3 University V
- 4 S.E.H. IV
- 5 Magdalen IV
- 6 Jesus III
- 7 Exeter IV
- 8 St. Hugh's I
- 9 Magdalen III
- 10 Oriel VI
- 11 St. Ann's III
- 12 Christ Church V

WOMENS DIV I (6.00)

- 1 Osler House
- 2 Wadham
- 3 Somerville
- 4 Pembroke
- 5 L.M.H.
- 6 Brasenose
- 7 St. Hugh's
- 8 New College
- 9 Wolfson
- 10 Jesus
- 11 University
- 12 St. Hilda's

WOMENS DIV II (4.30)

- 1 St. Catherine's
- 2 St. Anne's
- 3 Lincoln
- 4 Corpus Christi
- 5 Keble
- 6 St. Hugh's II
- 7 Christ Church
- 8 Somerville II
- 9 Hertford
- 10 S.E.H.
- 11 Worcester
- 12 Magdalen

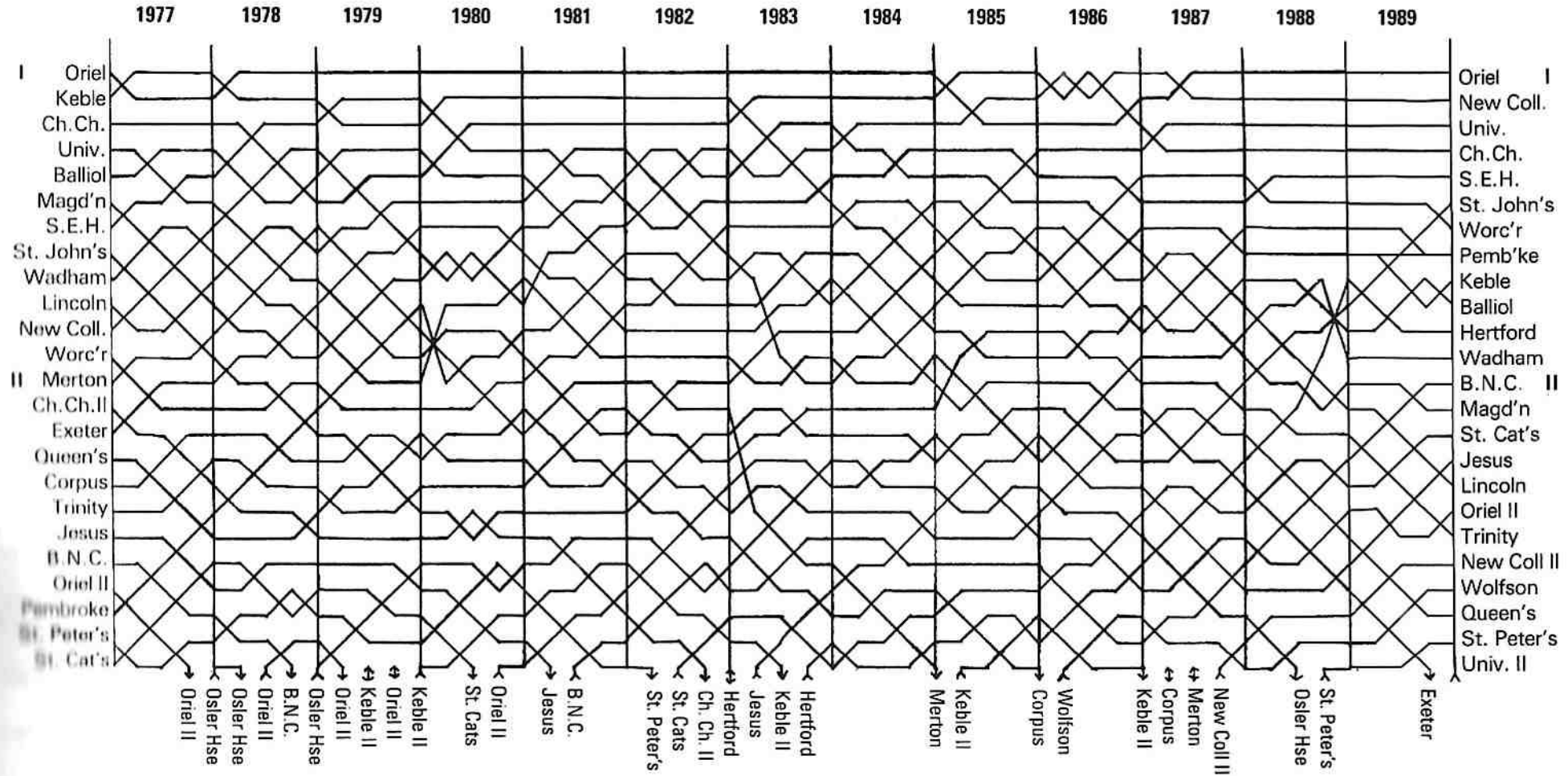
WOMENS DIV III (2.55)

- 1 St. John's
- 2 Balliol
- 3 Linacre
- 4 Queen's
- 5 L.M.H. II
- 6 Trinity
- 7 Brasenose II
- 8 St. Peter's
- 9 Merton
- 10 St. Hugh's III
- 11 Oriel
- 12 New College II

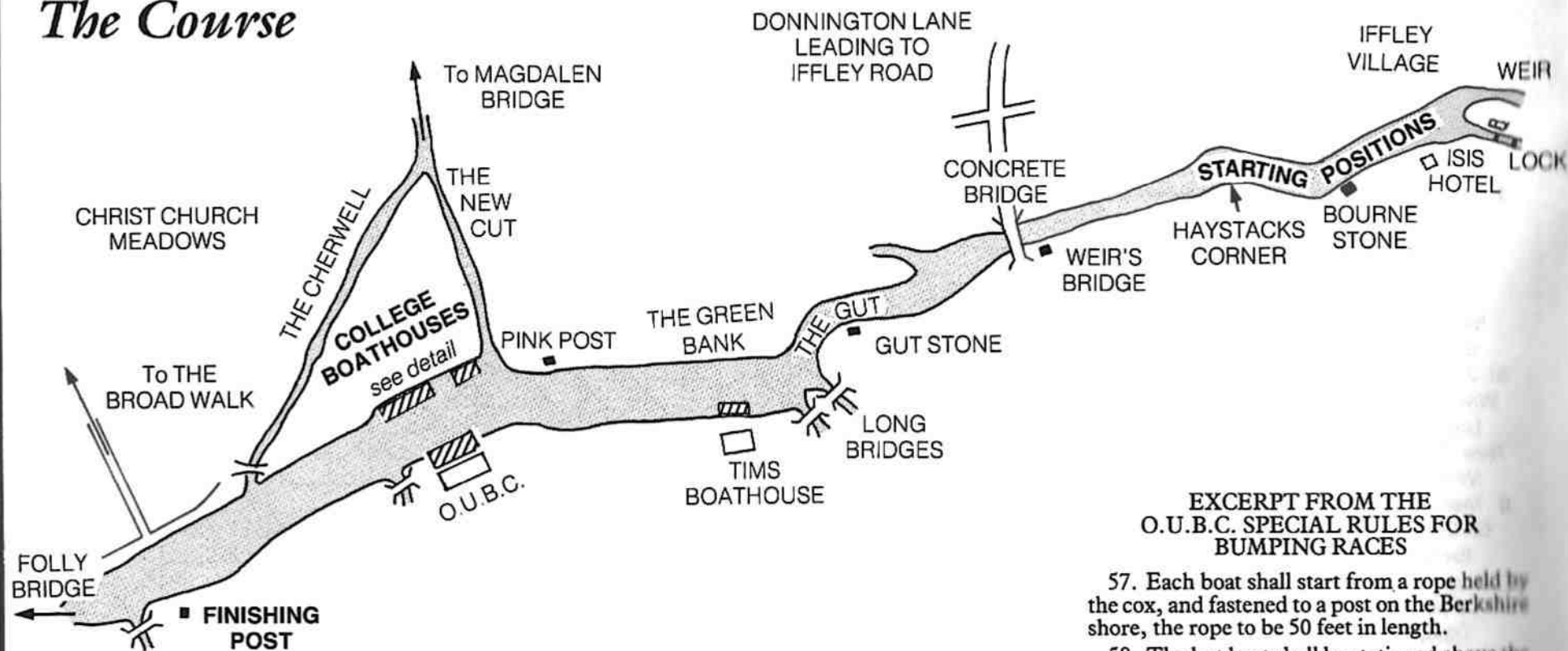
*WOMENS DIV IV (1.10)

- 1 Mansfield
- 2 Exeter
- 3 St. Hilda's II
- 4 St. Hugh's IV
- 5 Wadham II
- 6 Jesus II
- 7 St. Catherine's II
- 8 University II
- 9 Wolfson II
- 10 Hertford II
- 11 Osler House II
- 12 Oriel II

Top Two Divisions of
SUMMER EIGHTS
 1977-1989



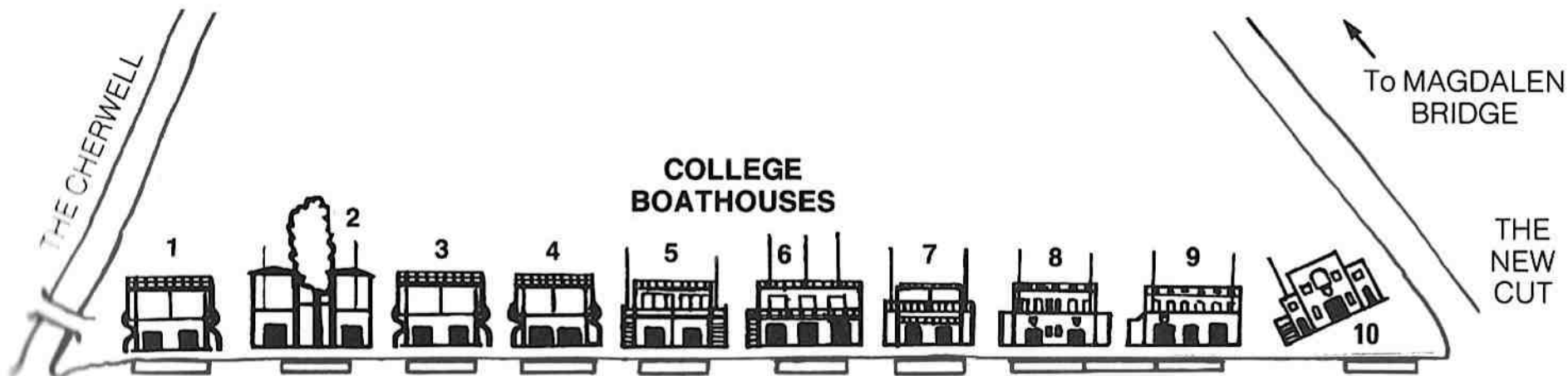
The Course



EXCERPT FROM THE O.U.B.C. SPECIAL RULES FOR BUMPING RACES

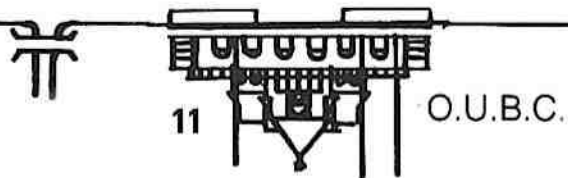
57. Each boat shall start from a rope held by the cox, and fastened to a post on the Berkshire shore, the rope to be 50 feet in length.
58. The last boat shall be stationed above the Starting Ring, and the distance between the posts shall be 130 feet for Eights.
65. The President shall provide a starter who shall fire a signal gun for the boats to take their places; after four minutes another gun; after the interval of one minute another gun for the start; after this third gun the Race shall always be held to have begun . . .
67. When a boat touches any part of the boat in front of it, or its oars or rudder, it shall be considered a bump, and also if a boat rows clean by another it shall be equivalent to a bump.
69. After every bump the boat bumping shall change places with the boat bumped whatever be their order before starting.

The College Boathouses *detail*



Key

1. St. Anne's, St. Hugh's and Wadham.
2. Pembroke and S.E.H.
3. Corpus and St. John's
4. Keble and Jesus
5. Exeter and Brasenose
6. Oriel, Lincoln and Queen's
7. Balliol, New and St. Benet's
8. Worcester and Merton
9. L.M.H., Magdalen and Trinity
10. Christ Church
11. Univ., St. Peter's, Wolfson, St. Cat's, Linacre and St. Antony's
Tims Boathouse. Hertford, St. Hilda's and Mansfield (see adjacent map)



Head of the River from 1815

1815 Brasenose	1849 Christ Church	1883 Exeter	1920 Magdalen	1958 Christ Church
1816 Brasenose	1850 Wadham	1884 Exeter	1921 New	1959 S.E.H.
1817 Christ Church	1851 Balliol	1885 Corpus	1922 New	1960 S.E.H.
1818 Christ Church	1852 Brasenose	1886 Magdalen	1923 Magdalen	1961 S.E.H.
1819 Christ Church	1853 Brasenose	1887 New	1924 Christ Church	1962 Christ Church
1820 No races	1854 Brasenose	1888 Magdalen	1925 Christ Church	1963 Keble
1821 No races	1855 Balliol	1889 Brasenose	1926 Christ Church	1964 S.E.H.
1822 Brasenose	1856 Wadham	1890 Brasenose	1927 Christ Church	1965 S.E.H.
1823 No races	1857 Exeter	1891 Brasenose	1928 Brasenose	1966 Oriel
1824 Exeter	1858 Exeter	1892 Magdalen	1929 Brasenose	1967 Keble
1825 Christ Church	1859 Balliol	1893 Magdalen	1930 Brasenose	1968 Keble
1826 Christ Church	1860 Balliol	1894 Magdalen	1931 Brasenose	1969 Keble
1827 Brasenose	1861 Trinity	1895 Magdalen	1932 Magdalen	1970 Keble
1828 Christ Church	1862 Trinity	1896 New	1933 Oriel	1971 Christ Church
1829 No races	1863 Trinity	1897 New	1934 Oriel	1972 Keble
1830 Christ Church	1864 Trinity	1898 New	1935 Oriel	1973 Christ Church
1831 Christ Church	1865 Brasenose	1899 New	1936 Oriel	1974 Christ Church
1832 Christ Church	1866 Brasenose	1900 Magdalen	1937 New	1975 Christ Church
1833 Queens	1867 Brasenose	1901 New	1938 Trinity	1976 Oriel
1834 Christ Church	1868 Corpus	1902 University	1939 Trinity	1977 Keble
1835 Christ Church	1869 University	1903 New	1940-1945 No races due	1978 Oriel
1836 Christ Church	1870 University	1904 New	to World War II	1979 Oriel
1837 Queens	1871 University	1905 Magdalen	1946 Trinity	1980 Oriel
1838 Exeter	1872 Pembroke	1906 Magdalen	1947 Trinity	1981 Oriel
1839 Brasenose	1873 Balliol	1907 Christ Church	1948 Trinity	1982 Oriel
1840 Brasenose	1874 University	1908 Christ Church	1949 Trinity	1983 Oriel
1841 University	1875 University	1909 Christ Church	1950 New	1984 Oriel
1842 Oriel	1876 Brasenose	1910 Magdalen	1951 Merton	1985 Christ Church
1843 University	1877 University	1911 New	1952 Balliol	1986 New
1844 Christ Church	1878 University	1912 New	1953 Magdalen	1987 Oriel
1845 Brasenose	1879 Balliol	1913 New	1954 Magdalen	1988 Oriel
1846 Brasenose	1880 Magdalen	1914 University	1955 Balliol	1989 Oriel
1847 Christ Church	1881 Hertford	1915-1919 No races due	1956 Balliol	
1848 Christ Church	1882 Exeter	to World War I	1957 Queens	

Your future career ...
M O R E R O W I N G ?

or

Rowe & Maw
Solicitors

Contact: Diane Austin
20 Black Friars Lane, London EC4V 6HD
Telephone 071-248 4282, Telex 262787 Mawlaw G, Fax: 071-248 2009

Rowe & Maw



Magdalen College

Boat Club Captain
STEPHEN CASS

Vice-Captain
MANU PEZIER

Shaman
MATT ROBINSON

Ladies' Captain
LINDSEY HAWARDEN

Ladies' Vice-Captain
FIONA GREEN

Boatman
STEVE GAISFORD

Treasurer
SIMON KENYON

Secretary
TIM SLATER

FIRST EIGHT (M)

Bow Mark Poulter
2 Stephen Cass
3 Will Crampton
4 Julian Cashmore
5 Manu Pezier
6 Nick Batchelor
7 Simon Kenyon
Stroke Rob Stephens
Cox Flo Wilcock
Coaches John Pilgrim-Morris
Dan Topolski

SECOND EIGHT (M)

Bow Graham Burnett-Hall
2 Angus Gilchrist
3 Chris Peters
4 Steve Dooley
5 Simon Rogers
6 Ollie Weeks
7 Martin Copeland
Stroke John Staggs
Cox Tim Slater
Coaches Stephen Cass
Nick Batchelor

THIRD EIGHT (M)

Bow Andy Wood
2 Dave Moseley
3 Philip Stratford
4 Andy Williamson
5 Jason McDonald
6 Bruno Newman
7 Gerry Englefield
Stroke Alex Hoyer
Cox Lesley Bonnet
Coaches Julian Cashmore
Will Crampton

FOURTH EIGHT (M)

Bow Roger Hutchins
2 Dan Carrol
3 Ryan Harris
4 Sam Crews
5 Mark Moshinsky
6 Christian Illies
7 Nick Braden
Stroke Liam Kelly
Cox Rachel Holden
Coach John Staggs

FIFTH EIGHT (M)

Bow Ajay Agarwal
2 Joe Cha
3 Ruben Fassinou
4 John Keller
5 James Tweedie
6 Mike Mazzeo
7 Dave Gross
Stroke Luca 'B.W.' Antilli
Cox Susan Kalter
Coaches Martin Copeland
Chris Peters

SIXTH EIGHT (M)

'SCHOOLS VIII'
Bow Tim Allman
2 Crispin Dent-Young
3 Monsieur Rob Fors-ter
4 Miss Liz Robinson
5 Alex Newton
6 Guy Sabey
7 John Quayle
Stroke Mike Smedley
Cox Matt Robinson
Coach Steve Redgrave

SEVENTH EIGHT (M)

'Mixed Crowd of Rogues'
Bow Huw 'Brown Bottle'
Milward
2 Paul 'Crab' Hughes
3 Mark 'Wash Out' Gilbertson
4 Steve 'Gynaecological'
Lord
5 Roger 'Yankie Bastard'
Kennedy
6 Tim 'Damage' Doyle
7 Merlin 'Mad Monk'
Crossley
Stroke John 'Log' Levesley
Cox Jane 'What Did I Do May
Morning' Noble
Coaches Mike 'Insert Stupid
Nickname' Spracklen

(EIGHTH EIGHT M)

'The Bulbon Mothership'
Bow Benito Mussolini
2 Mr. Quisling
3 Kim Philby
4 Murray
5 Vicky Wild
6 Stewart Bond
7 Peter Daker
Stroke Peter Baillargeon
Cox Bulbon 'The Evil' Porter
Coach Kit Hunter

FIRST EIGHT (W)

Bow Viva Bartkus
 2 Kim Powell
 3 Vicky Reynolds
 4 Stef Drews
 5 Sharon Heath
 6 Katie Healey
 7 Victoria Donaldson
Stroke Lindsay Hawarden
Cox Richard Village
Coach Phil Rowley

SECOND EIGHT (W)

Bow Jenny Eachus
 2 Joanna Norton
 3 Madeleine de Remusat
 4 Kathy Skellon
 5 Sarah Hill
 6 Anna Goodwin
 7 Sarah Francis
Stroke Fiona Green
Cox Darren Tymens
Coaches Lindsay Hawarden
 Liz Robinson

THIRD EIGHT (W)

Bow Sholom Sirgis
 2 Tory Cable
 3 Susan Fry
 4 Lisa Fragner
 5 Margaret Wu
 6 Maria Reiling
 7 Nicola Firby
Stroke Sarah Clener
Cox Jean Chen
Coaches Steph Panting
 Victoria Donaldson

**FOURTH EIGHT (W)
'MCR'**

Bow Mary Heimann
 2 Elizabeth Horowitz
 3 Cindy McCreery
 4 Katy Baron
 5 Claire Valente
 6 Susan Bruns
 7 Alexandra Mason
Stroke Guinevere Eden
Cox Paraq Patil
Coach Stephen Cass



Magdalen College

Boat Club Captain
STEPHEN CASS

Vice-Captain
MANU PEZIER

Shaman
MATT ROBINSON

Ladies' Captain
LINDSEY HAWARDEN

Ladies' Vice-Captain
FIONA GREEN

Boatman
STEVE GAISFORD

Treasurer
SIMON KENYON

Secretary
TIM SLATER



Mansfield College

Boat Club Captain
DAVID HOWARD

Vice-Captain
TIM BURROUGHS

Ladies' Captain
BECKY MAMMEN

President
MARTIN SUMMERFIELD

Treasurer
TIM MARTIN

Secretary
HARRIET LOEWE

FIRST EIGHT (M)

Bow Simon Cathery
2 Oli Pryke
3 Manus McMullen
4 James Durand
5 Andy Moulton
6 Jan Fischer
7 David Howard
Stroke Tim Martin
Cox Simon Rogers
Coach Bill Thompson

SECOND EIGHT (M)

Bow David Paul-Pertaub
2 Ed Cox
3 Larry Beck
4 Richard Underhill
5 Maverick Whitticase
6 Neil Elton
7 Ben Sennitt
Stroke Butch Burroughs
Cox Dave Cherritt
Coaches Lisa Baglin
Chris Cooke

FIRST EIGHT (W)

Bow C. Radwan
2 C. Bankes
3 R. Barnes
4 F. Baldry
5 J. Grant
6 N. West
7 D. Wilkin
Stroke B. Mammen
Cox L. Parker
Coach T. Wilkes

SECOND EIGHT (W)

Bow K. Brick
2 C. Stevens
3 J. Yun
4 L. Gow
5 A. Hussein
6 J. Iba
7 F. Reynolds
Stroke C. McClen
Cox O. Davies
Coach R. Barker

FIRST EIGHT (M)
Bow Robin Forrest
2 Andy Robertson
3 Colin Merryweather
4 Tim Kuschill
5 Paul Hepher
6 Damien Eames
7 Jeff Mathews
Stroke David Mills
Cox Abigail Adams
Coach Franta Provaznik

SECOND EIGHT (M)
Bow Mark Corben
2 Conrad McDonnell
3 Gym Jones
4 Mike Porter
5 David Bailey
6 Hugh Varney
7 Alex Cook
Stroke Steve Bosworth
Cox Ian Harris
Coach David Mills

FIRST EIGHT (W)
Bow Heather Johnson
2 Julie Greenough
3 Heather Wakefield
4 Rachel Willmot
5 Susanne Erb
6 Rachel Morley
7 Julie Potter
Stroke Jo Howard
Cox Simon Shields
Coach Phil Halliday

SECOND EIGHT (W)
Bow Jacquie Farrow
2 Sally Spiers
3 Helena Elkington
4 Ileana Manos
5 Lucy Wyles
6 Michelle Jackson
7 Emma Grainger
Stroke Stephanie Driskell
Cox Ione Fine
Coach Jo Howard



Merton College

Boat Club Captain
PAUL HEPHER

Vice-Captain
JEFF MATHEWS

Ladies' Captain
JULIE POTTER

UNIVERSITY

B. J. HARRIS



- Portraits & Weddings
- Degree Days
- College Balls/Survivors Groups
- Eights Week/Torpids
- Frames & Albums
- 5 Min Colour Passport Studio (no appointment necessary)
- Commercial & Architectural

PHOTOGRAPHERS

GILLMAN & SOAME



**Specialists in
group photography
including:**

- Sports Teams
- Freshmen
- JCR's
- Conferences
- Dining Clubs
- Summer Schools

8 ST MICHAEL'S STREET, OXFORD
Telephone 245487

FIRST EIGHT (M)
Bow Craig Goulding
 2 Harry Werksman
 3 Tim Jobson
 4 James Myerscought
 5 Tom Cadoux-Hudson
 6 Jas Malhi
 7 Richard White
Stroke Mike Spilsbury
Cox Vicky Wild
Coaches P. Pritchard
 D. Topolski
 P. Sudbury

SECOND EIGHT (M)
Bow A. Vaughn
 2 S. Carlile
 3 T. Irgens
 4 N. Melhuish
 5 J. Muir
 6 T. Lack
 7 T. de Swiet
Stroke H. Sainty
Cox S. Jones
Coaches D. Ruiz
 T. Gokey
 P. Hubel

THIRD EIGHT (M)
Bow H. Barkley
 2 C. Heatley
 3 A. Squibb
 4 T. Hall
 5 R. Shiel
 6 M. Williamson
 7 R. Armstrong
Stroke A. Soluman-Pao
Cox H. Overend
Coach G. Heppel

FOURTH EIGHT (M)
Bow D. Taylor
 2 D. Park
 3 N. Heaton
 4 B. Whitehead
 5 A. Halliwell
 6 J. Adams
 7 R. Brunner-Ellis
Stroke C. Grant
Cox S. Dyer
Coach H. Werksman

FIFTH EIGHT (M)
 "Schools"
Bow N. Butler
 2 H. Mortimer
 3 P. Nicklin
 4 S. Lindsay
 5 B. Simpson
 6 J. Smith
 7 R. Salwen
Stroke T. Gokey
Cox A. Mitchell

FIRST EIGHT (W)
Bow Emma Hudson
 2 Eleanor Farrington
 3 Nichola Schumacher
 4 Alex Pilkington
 5 Heidi Hauffe
 6 Alison Salvesen
 7 Lynne Whitehead
Stroke Ben Waterfield
Cox Kathryn Hull
Coaches D. Salvesen
 T. Gokey
 R. Salwen
 S. Sudbury
 C. Smith

SECOND EIGHT (W)
Bow N. Castell
 2 C. Campbell
 3 J. Kerr
 4 E. Sepanski
 5 A. Moray
 6 C. Oliver
 7 M. Cowling
Stroke F. Witt
Cox S. Moore
Coaches H. Hauffe
 H. Werksman
 C. Goulding

THIRD EIGHT (W)
Bow N. Birchall
 2 L. Browning
 3 J. Johnstone
 4 S. Simon
 5 E. Rudgard
 6 H. Clarke
 7 S. Chilvers
Stroke A. Wiseman
Cox S. Sinha



New College

President
 A. TROTMAN

Captain of Boats
 R. WHITE

Captain of Lower Boats
 T. LACK

Men's Secretary
 J. SEYBOLD

Ladies' Captain of Boats
 H. HAUFFE

Ladies' Captain of Lower Boats
 A. SALESON

Ladies' Secretary
 C. HAWKESWORTH

Treasurer
 A. MITCHAL

Social Secretary
 R. ARMSTRONG



Oriel College

Boat Club Captain
P.P. SWADDLING

Bosun
M.N. RIVERS

Ladies' Captain
P. MCGOWAN

Boatman
C. COX

Treasurer
C.H.E. BELL

Secretary
R.P.A. BROWN

FIRST EIGHT (M)

Bow S.N. Oarlard
2 T.J. Knight
3 A.P. McNally
4 N.O. Stevenson
5 N.J. Hirst
6 A. Borer
7 P.P. Swaddling
Stroke J.P. Hodges
Cox G.S. Radcliffe
Coach M. Hyndman

SECOND EIGHT (M)

Bow S. Yerramilli Rao
2 R.P.A. Brown
3 C.H.E. Bell
4 B.E.C. Lynch
5 R.J. Hirst
6 B.W. Dreyer
7 R.A. Sayeed
Stroke P.D.N. Kennedy
Cox J.S. Williams
Coaches J.C. McTernan
G. Lestage

THIRD EIGHT (M)

Bow G.N. Whitehead
2 P.D.G. Riviere
3 P.J.C. Warren
4 E.U. Pearse
5 S.M. Bullivant
6 T.B. Low
7 P.W.H. Buckney
Stroke Q
Cox M.W. Watts
Coach M.W. Watts

FOURTH EIGHT (M)

Bow R.H. Fish-Hunter
2 M.J. Rudd
3 D.N. Miller III
4 G.B. Spoons
5 A.D.M. Brimelow
6 S.L. Hales
7 R.A. Laughton
Stroke T.H. Coates
Cox K. Williams
Coach A. Bannam

FIFTH EIGHT (M)

Bow J.S. Banks
2 R.K. Sharma
3 D. Phillips
4 A. Radford
5 T.A. Owen Hughes
6 Bob Holness
7 L.J. Scott
Stroke J.D. Murray
Cox N. Jones
Coach C. Nichols

SIXTH EIGHT (M)

"The Hoods"
Bow N. Franklin
2 R.A. Hull
3 G. Lestage
4 M.N. Rivers
5 M. Wigston
6 T.E.G.R. Cassidy
7 C.J. Cheesman
Stroke R. Ensor
Cox A. Emir
Coach Z. Cohen

SEVENTH EIGHT (M)

Bow C.J.J. Bonas
2 B.C. Rassiguel
3 E.J. Rayner
4 N. Mayfield
5 J. Roberts
6 A. Booth
7 G. Reypart
Stroke M. Smith
Cox J. Ashall
Coach A. Moor-Dale

EIGHTH EIGHT (M)

Bow K.S. Ghata Aura
2 S. Matton
3 N. Lovell
4 N.T. Gardner
5 J. Fisher
6 J. Geen
7 M. Holt
Stroke S. York
Cox O.A.P. Minter
Coach L. Ron Hubbard

NINTH EIGHT (M)

"The MCR"
Bow D.N. Banbury
2 G.P.C. Evans
3 N. Marsland
4 J.C. McTernan
5 R. Saudhu
6 J. Arthur
7 W.H. Kelly
Stroke D.I.G. Myers
Coxes H.J. Cort
S. Carthy
Coach J. Allen

TENTH EIGHT (M)

'The Seshers'
Bow W.S. Forster
 2 B. Moore
 3 K. Rowley
 4 G. Campbell
 5 A. Harris
 6 D. Smith
 7 C.A. Brand
Stroke J.C. Baty
Cox C.E.M. Paver
Coach A. Terms – Drinking

ELEVENTH EIGHT (M)

'The Beaglers'
Bow M. Rampley
 2 P. Vaciago
 3 N. Cartell
 4 S. Trafalgar-Phillips
 5 J. Mitchell
 6 M. Gilpin
 7 A. Brown
Stroke M. Todd
Cox R. Edwards

TWELTH EIGHT (M)

'The Beer, Tabs & Skittles VIII'
Bow K. Keegan
 2 D. Lyons
 3 T.A. Dillon
 4 A. Holmes
 5 S. Beresford
 6 S. Redgrave
 7 Y. Pimenhou
Stroke J.P. McEnroe
Cox E. Pimenhou
Coach E. Bristow

FIRST EIGHT (W)

Bow Tamsin James
 2 Janet Dukes
 3 Karen Hamilton
 4 Pippa McGowan
 5 Tamsin Boitel-Gill
 6 Emma Maloney
 7 Sarah Sharman
Stroke Roz Lawson
Cox Robin Tambyraja
Coach G.S. Radcliffe

SECOND EIGHT (W)

Bow Fiona Graham
 2 Barbara Weis
 3 Lizzie Broadbent
 4 Delia da Sousa Correa
 5 Eleanor Burke
 6 Rachel Johnson
 7 Ceri Pickering
Stroke Fiona Riddick
Cox Catherine Bridge
Coach Pete Kennedy

THIRD EIGHT (W)

Bow Jane Oliver
 2 Jo Kettle
 3 Carole Rix
 4 Reiko Furuse
 5 Roz Pragnell
 6 Paula de Cardis
 7 Michelle Turner
Stroke Clare Wallace
Cox Nia Jones

FOURTH EIGHT (W)

Bow Abby Rudzin
 2 Synead Hanks
 3 Janine Murphy
 4 Geri Lewis
 5 Claudia Kuchenbauer
 6 Yo Chang
 7 Elizabeth Windsor
Stroke Alison Brown
Cox Phil Madge



Oriol College

Boat Club Captain
 P.P. SWADDLING

Bosun
 M.N. RIVERS

Ladies' Captain
 P. MCGOWAN

Boatman
 C. COX

Treasurer
 C.H.E. BELL

Secretary
 R.P.A. BROWN

ORIEL REGATTA

June 6th, 7th and 8th (Wed., Thur., Fri. of 7th Week)

Pewter tankards for all members of winning crews.

Categories:

Championship VIII's

Sprint VIII's

Senior VIII's

Junior VIII's

Novice VIII's

(crews failing to "row on")

Open Mixed VIII's

Novice Mixed VIII's

Women's VIII's

Women's Sprint VIII's

Women's Junior VIII's

Women's Novice VIII's

(crews failing to "row on")

Championship Coxless IV's

Novice IV's

Women's Novice IV's

Men's Pairs

Championship sculls

Novice sculls

Women's sculls

For details of the above categories, entry fees etc, see your Boat Club Captain,
and watch your College notice board.

Closing dates for entries: Friday June 1st

FIRST EIGHT (M)

Bow Sarit "Shera" Lesnik
Oberstein
2 Paul "S.P.B.W." Sutherland
3 Matt "Birdman" Collins
4 Martin "He-Man" Vessely
5 Alastair "Power House"
Graham
6 Joachim "Arnie" Schlage
7 Malcolm "B.P.B.W." Hilton
Stroke Matt "What?" Bartlett
Cox Sally "Wild Whip" Sharpe
Coaches Emma "Firm" Stuart
Jame "Scab" Price

SECOND EIGHT (M)
"Doctors"

Bow John Bell
2 David Murray
3 David Wilson
4 James Wilson-MacDonald
5 Richard Cobb
6 Pete Selwood
7 Cal McLennan
Stroke Andy Carr
Cox Georgina Clarke

THIRD EIGHT (M)

Bow Duncan Rea
2 Gwyn Bebb
3 Gary Gutteridge
4 Tony Rahman
5 Jason Wilkins
6 Andy Hopley
7 Graham Pollock
Stroke Rob Hadden
Cox Rebecca Reynolds
Coaches Mel Blake
Sue Parker
Nazneen Rahman

FIRST EIGHT (W)

Bow Sharon Holland
2 Joanna Spain
3 Lianne Khoo
4 Julie Frier
5 Nikki Jackson
6 Zoe Rogers
7 Ashleigh Codley
Stroke Sue Parker
Cox Beth Harrison
Coaches Pete Sudbury
Kath Finucang
Marcus Drake
Bill Parry
Geoff Page

SECOND EIGHT (W)

Bow Cate Milroy
2 Maryna Lewinski
3 Jenny Weir
4 Kaye England
5 Lucy Baker
6 Nicky Hargreaves
7 Beth Harrison
Stroke Nazneen Rahman
Cox Ian Pope
Coaches Mel Blake
Sharon Holland



Osler House

Boat Club Captain
MALCOLM HILTON

Vice-Captain
PAUL SUTHERLAND

Ladies' Captain
NIKKI JACKSON

Ladies' Vice-Captain
SHARON HOLLAND

Secretary
EMMA STUART

Treasurer
JAMES PRICE



Pembroke College

Boat Club Captain
KATRINA BACON

Men's Captain
CHRIS HOARE

Men's Vice-Captain
MATTHEW BANNERMAN

Ladies' Vice-Captain
ANNA BARNETT

Botswain
ELSA TRIM

Boatman
CHRIS MORGAN

Secretary & Treasurer
MATTHEW TOWNEND

Social Secretary
EMMA RAYMENT

FIRST EIGHT (M)

Bow Matt Bannerman
2 Nick Westwood
3 Jason Hones
4 Chris Hoare
5 Ian Green
6 Dan Knowles
7 Neil Davies
Stroke Tim Waters
Cox Helena Stoward
Coach Bill Potter

SECOND EIGHT (M)

Bow Brian Mulholland
2 Adrian Cox
3 Duncan Crowdy
4 John Plowman
5 Nick Brown
6 Jermoe Spaargaren
7 David Cairns
Stroke Donald Leitch
Cox Eleanor Clarke
Coach Viv Artz

THIRD EIGHT (M)

Bow John Porter
2 Peter Mayhew
3 Andy Williams
4 Dan Nother
5 Chris Rokos
6 Jeremy Edgecliffe-Johnson
7 Julian Gooding
Stroke John Molloy
Cox Liz Mottershaw
Coach Katrina Bacon

FOURTH EIGHT (M)

Bow Alice Antonioni
2 Ahamed Hassan
3 Tim Crosland
4 Steve Lintott
5 Richard Payne
6 Pete Lloyd-Jenkins
7 Ed Francis
Stroke Ashley Malster
Cox Tory Jones
Coaches Adrian Cox
Nick Palmer

RUGBY VIII (M)

Bow Stephen Stokes
2 Paul McCubbin
3 Derek Young
4 David Lunn
5 Jim Bampton
6 Iain Gravestock
7 Rob Evans
Stroke Matt Kirkby
Cox Sarah Newby
Coaches Emma Rayment
Pete Lovett

SCHOOLS VIII (M)

Bow Nick Crabtree
2 Jon Croft
3 Charles Cubson
4 Pete Lovett
5 Simon Palethorpe
6 Steve Divall
7 Chris Chappell
Stroke David Noble
Cox Rachel Morgan
Coach Who need one!

FIRST EIGHT (W)

Bow Claire Ellis
2 Elsa Trim
3 Emma Rayment
4 Katrina Bacon
5 Kate Rew
6 Vivienne Artz
7 Anna Barnett
Stroke Melanie Toyne-Sewell
Cox Gordon Buxton
Coach Luke Howard

SECOND EIGHT (W)

Bow Lucy Green
2 Holly Hutson
3 Jane Durney
4 Anne Stares
5 Sascha Hooker
6 Sophie Brookes
7 Julie Webber
Stroke Nancy Rector
Cox Andrew Allen
Coach Tim Waters

THIRD EIGHT (W)

Bow Juliette Parsons
2 Tory Jones
3 Emma Walton
4 Rochelle Tucker
5 Caroline Norris
6 Helen Cardrick
7 Sarah Gillingham
Stroke Helena Stoward
Cox Cathy Rees
Coach Sarah Newby

RIVER THAMES PASSENGER BOATS

REGULAR DAILY SERVICE
MID MAY TO MID SEPTEMBER
FROM

*Oxford, Abingdon, Reading,
Henley, Marlow, Maidenhead, Windsor,
Staines.*

*Available on board, light refreshments, bar,
toilets.*

BOATS FOR PRIVATE HIRE BY THE DAY, HALF DAY OR EVENING

Disco or Jazz Band can be arranged

Bar on-board

Catering menus on request

**Dinghies, Punts
Skiffs made to order**

Write or ring for full details to

SALTER BROS LTD

Folly Bridge Oxford 243421

FOURTH EIGHT (W)

Bow Benedicta Blanquet
2 Rachel Grunert
3 Helen Moore
4 Lucia Lamotan
5 Farah Daghistani
6 Allison Parlin
7 Liz Mottershaw
Stroke Rachel Crasnow
Cox John Porter
Coach Nancy Recton

FIFTH EIGHT (W)

Bow Sara Quli
2 Debbie Sutton
3 Jane Readman
4 Ruth Deyerment
5 Alexis Coricer
6 Kate Henderson
7 Caroline Gill
Stroke Sylvie Tiezzi
Cox Emily Shamma
Coach Andy Williams



Pembroke College

Boat Club Captain
KATRINA BACON

Men's Captain
CHRIS HOARE

Men's Vice-Captain
MATTHEW BANNERMAN

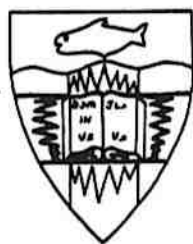
Ladies' Vice-Captain
ANNA BARNETT

Botswain
ELSA TRIM

Boatman
CHRIS MORGAN

Secretary & Treasurer
MATTHEW TOWNEND

Social Secretary
EMMA RAYMENT



Regent's Park College

Boat Club Captain
ROS McCALLUN

Secretary
RACHEL BARLOW

Treasurer
RICHARD ALTHAM

FIRST EIGHT (M)

<i>Bow</i>	Dan Roth
2	A. Starkie
3	J. Kohler
4	D. Campbell
5	R. Altham
6	T. Walker
7	S. Parker
<i>Stroke</i>	Rich Darning
<i>Cox</i>	A. Brockbank
<i>Coaches</i>	Mike Hill Oti Bunacili

Begin at

WALTERS & Co (Oxford) Ltd
TEN TURL STREET, OXFORD

The Official University Outfitters

- Academic gowns for all degrees and occasions for sale or hire.
- All colleges and clubs ties, crested and striped.
- Navy blue blazers, boaters and college ribbons.
- Full and half blue sporting sweaters, all clubs.
- All college scarves, 6' long and all wool.
- We are always pleased to quote for college team shirts and rowing vests.
- All colleges cricket sweaters, all wool.
- Formal and dresswear hire dept (our own stock).
- Hairdressing saloon, with five chairs (finest in town).

You will find us opposite Lincoln College

WALTERS & Co. Turl Street, Oxford.
Tel. 241848

FIRST EIGHT (W)
Bow Nicky English
 2 Jane Hughesdon
 3 Vanessa Patin
 4 Heather Pinches
 5 Sue Hartley
 6 Sarah Gibson
 7 Tamsin Brew
Stroke Erica Othen
Cox Fiona Pleavin
Coach Phil Halliday
Ego
Hooster Sean

SECOND EIGHT (W)
Bow Sacha Romanovitch
 2 Vicky Edwards
 3 Frances Holliday
 4 Vicky Heaney
 5 Nikki Vos
 6 Catherine Mawby
 7 Rachel Holmes
Stroke Julia Simpson
Cox Claire Matthews
Coach Leslie Lane

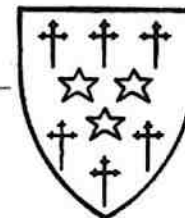
THIRD EIGHT (W)
Bow Sophie Wallis
 2 Auriol Miller
 3 Claudia Saloman
 4 Lucy Spiers
 5 Sue Klopman
 6 Kathryn Walters
 7 Leonie Barron
Stroke Jo Clarke
Cox Kate Yoreston
Coach Steve Eyles

FOURTH EIGHT (W)
Bow Sharon Aberhard
 2 Olivia Scannel
 3 Tina Dalton
 4 Tiz Coffey
 5 Orla Doherty
 6 Katherine Bannister
 7 Moira Hadwin
Stroke Narmada de Silva
Cox Kath Greening
Coaches Erica Othen
 Jane Hughesdon
 Rachel Holmes
 George Fellows

FIFTH EIGHT (W)
Bow Faye Wykes
 2 Jane Willoughby
 3 Tamsin Sylvester-Bradley
 4 Stephanie Friend
 5 Ruth Rybowski
 6 U.C. Less
 7 Sarah Ferguson
Stroke Justin Time
Cox Sarah Gibbins
Coach Rachel Fox

SIXTH EIGHT (W)
Bow Sian Thomas
 2 Claire Biddlecombe
 3 Hannah Rutledge
 4 Eleanor Hall
 5 Jane Dickers
 6 Suzanne Higgs
 7 Jane Greenall
Stroke Alexia Scarlett
Cox Robeta Levy
Coaches Karen Hoffman
 Roberta Levy

SEVENTH EIGHT (W)
Bow Claire Matthews
 2 Jo Shepard
 3 Nivi Narang
 4 Amy Piper
 5 Joanne Fischer
 6 Sarah Crisp
 7 Mette Rudevin
Stroke Christina Quastk
Cox Betty Chen
Coaches Vanessa Patini
 Nikki Voss



Somerville College

Boat Club Captain
JO CLARKE

Vice-Captain
SOPHIE WALLIS

President
ERICA OTHEN

Treasurer
NIKKI VOSS

Secretary
RACHEL HOLMES

Fund Raiser
TIZ COFFEY

Head Cox
RIONA PLEAVIN

Rowell of Oxford Ltd

FAMOUS SINCE 1797

Suppliers of fine silver and plate to the City and University

Dealers in fine Quality Diamonds and Jewellery

Repairs and Remodelling a speciality

12, The Turl

Oxford 242187

FIRST EIGHT (M)
Bow Paul Goel
 2 Gavin Bridge
 3 Mark Golding
 4 Steve Mansfield
 5 Stace Lindsay
 6 Paul Murray
 7 Nathan Taylor
Stroke John Lane
Cox Ian Brodie
Coach Tim Stubbs

SECOND EIGHT (M)
Bow Steve Martin
 2 Giles Philip
 3 Ben Tolhurst
 4 Guy Fulton
 5 Andy Savage
 6 Mike Hayton
 7 Charlie Graeber
Stroke Alex Panayides
Cox Anita Bhattacharjee
Coaches Kirsty Grieve
 Louise Forder

THIRD EIGHT (M)
Bow Adam Tolley
 2 George Chan
 3 John Boulter
 4 Pat Trew
 5 Adam O'Brien
 6 Pete Due
 7 Dave Lenhardt
Stroke Paul Townend
Cox Sally Hobbs
Coaches Paul Goel
 Mike Hayton

FOURTH EIGHT (M)
Bow Jim Elliot
 2 Gary Hein
 3 Morgan Jones
 4 Don James
 5 Troy Coker
 6 Jim Fewtrell
 7 Kent Bray
Stroke Brian Smith
Cox Julie Dean
Coaches Paul Goel
 Mike Hayton

FIRST EIGHT (W)
Bow Charlotte Avery
 2 Laura Andrews
 3 Karen Cooper
 4 Rebecca Reading
 5 Louise Forder
 6 Julie Perrin
 7 Andrea Braemer
Stroke Kirsty Grieve
Cox Lucy Workman
Coach Nathan Taylor

SECOND EIGHT (W)
Bow Melanie Redfearn
 2 Kate Handforth
 3 Harriet Hall
 4 Liz Fernando
 5 Stephanie McKeown
 6 Rebecca Tunstall
 7 Jess Redford
Stroke Katherine Baldwin
Cox Andy McGlown
Coaches Gavin Bridge
 Steve Mansfield

THIRD EIGHT (W)
Bow Anne König
 2 Atsuko Yoshida
 3 Alison Bunting
 4 Candi Soames
 5 Alison Kennedy
 6 Rachel Turner
 7 Chantelle Jay
Stroke Debbie Hockedy
Cox Alyson Rock
Coach Andy McGlown

FOURTH EIGHT (W)
Bow Karen Hopkins
 2 Louisa Nitrato-Izzo
 3 Sippi Moghaddan
 4 Abby Discombe
 5 Lucy Flynn
 6 Melanie Smith
 7 Julia McCormick
 8 Caroline Knappet
Cox Kate Byrne
Coaches Steve Martin
 Giles Philip



St Anne's College

Boat Club President
TIM STUBBS

Mens' Captain
GAVIN BRIDGE

Womens' Captain
KIRSTY GRIEVE

Mens' Vice-Captain
STEVE MANSFIELD

Ladies' Vice-Captain
LOUISE FORDER

Treasurer
LUCY WORKMAN

Secretary
LAURA ANDREWS

Equipment Officers
STEVE MARTIN
GILES PHILIP



St Catherine's College

Boat Club Captain
OLLIE HASSALL

Vice-Captain
RICHARD LINDSAY

Ladies' Captain
SUSANNAH RAYNER

President
NEIL CHUGANI

Secretary
STEVE EYLES

FIRST EIGHT (M)

Bow Peter Dymond
2 Keith Duncan
3 Jon Turner
4 John Mitchell
5 Gavin Butcher
6 Matthew Wood
7 Richard Lindsay
Stroke Ollie Hassall
Cox Anu Dudhia
Coach Jean Le Manac'h

SECOND EIGHT (M)

Bow Cosmo Lush
2 Matt Savage
3 Jeremy Hall
4 Nick Thorpe
5 Dave Bishop
6 Richard Cupley
7 Mark Miuduwnik
Stroke Tom Bainton
Cox George Latham
Coaches Anu Dudhia
Ollie Hassall

THIRD EIGHT (M)

Bow Martin Millmore
2 Jim Morrish
3 John Taylor
4 David Batt
5 Bob Miles
6 Ramon Reyes
7 Mark Hatley
Stroke Jason Caulfield
Cox Tracey Loveridge
Coaches Richard Lindsay
Ollie Hassall

FOURTH EIGHT (M)

Bow Michael Suzman
2 David Bass
3 James Forde
4 Pat Pructor
5 Richard Driver
6 Judd Muir
7 Bryan Barber
Stroke Clive Maxwell
Cox Rachel Clarke
Coach Lucy Moore

FIFTH EIGHT (M)

Bow Arnie Waters
2 Simon Aspinall
3 Rob Wilson
4 Mark Lewis
5 Mark Neave
6 Ric Ozsanlav
7 Steve Eyles
Stroke Jim Bigger
Cox Dave Benson
Coach Neil Chugani

SIXTH EIGHT (M)

Bow Bayliatch Brindle
2 Ploppy Frost
3 The Squelch Welsh
4 Keeny Turner
5 Slaps Westwood
6 Stevie Boyo Barclay
7 Scrotter Teasel
Stroke Madwhen Pissed Fraser
Cox Looby Lou Dunns
Coach Far Too Serious Rayner

FIRST EIGHT (W)

Bow Jen Atkinson
2 Kirsty Gaston
3 Emma Alun-Jones
4 Jacquie Wong
5 Eleanor Cooper
6 Susannah Rayner
7 Laura Maclehorse
Stroke Nikki Hill
Cox Jess Pelham
Coaches Matthew Pinsent
Heidi Avery

SECOND EIGHT (W)

Bow Susan Coles
2 Harriet Linger
3 Kathy Ainsworth
4 Sarah Haywood
5 Emma Waterfield
6 Madya Booth
7 Sarah Willis
Stroke Jackie Heath
Cox Pawan Patil
Coach Lucy Moore

THIRD EIGHT (W)

Bow Mary Fridlington
2 Lisa Fabricant
3 Kathryn Simmins
4 Louise Groves
5 Bethan Williams
6 Louise Wilson
7 Liz Moorhead
Stroke Katy Rimer
Cox Andy Nicoll
Coach Angela Sweatman

FOURTH EIGHT (W)

Bow Sarah Gates
 2 Liz Ortiz
 3 Tracey Robertson
 4 Claire Fatchen
 5 Heather Hoffman
 6 Kirsten Wilson
 7 Laura Heymann
Stroke Mary-Ann Connolly
Cox Michell Robinson
Coaches Rob Wilson
 Liz Bayles

FIFTH EIGHT (W)

Bow Katie Long
 2 Miranda Stewart
 3 Lucy Moore
 4 Louisa Bayles
 5 Angela Sweatman
 6 Cath Zissel
 7 Sarah Frost
Stroke Heidi Avery
Cox
Coach Jim Bigger



St Catherine's College

Boat Club Captain
OLLIE HASSALL

Vice-Captain
RICHARD LINDSAY

Ladies' Captain
SUSANNAH RAYNER

President
NEIL CHUGANI

Secretary
STEVE EYLES

George Sims
Racing Boats



DREISSIGACKER

ULTRA LIGHTS NOW AVAILABLE



St Edmund Hall

Boat Club Captain
JAMES A. HIMES

Vice-Captain
MARK LEWIS

Ladies' Captain
HELEN IXER

Ladies' Vice-Captain
CATHERINE JARDINE

Treasurer
SEAN COCHRANE

Secretary
MARK FOX

Social Secretary
ANDY LAWS

Ladies' Social Secretary
DEBBIE CANE

Steward
PETE MICHAELIN

FIRST EIGHT (M)

Bow A. Laws
2 E. Caddick
3 M. Fox
4 P. Billyard
5 J. Himes
6 D. Strupp
7 M. Waller
Stroke M. Jenkins
Cox I. Nanyakkara
Coach Hugh Thomas

SECOND EIGHT (M)

Bow S. Martin
2 C. Cahall
3 M. Lauder
4 M. Lewis
5 S. Whittington
6 S. Asplin
7 S. Hodgson
Stroke S. Cochrane
Cox S. Davison
Coach S. Gerrish

THIRD EIGHT (M)

Bow Matt Spencer
2 M. Lemon
3 M. Wilson
4 M. Pluck
5 K. Zielimski
6 B. Mayes
7 R. Breen
Stroke M. Ehleine
Cox M. Thatcher
Coach S. Cochrane

FOURTH EIGHT (M)

Bow R. Owen
2 A. Hunter
3 S. Atkinson
4 R. Surpit
5 D. Williams
6 D. Holden
7 J. Brace
Stroke S. Orbell
Cox S. Landy

FIFTH EIGHT (M)

Bow S. Dhillon
2 T. Leman
3 L. Jones
4 J. Peterkick
5 J. Ferguson
6 J. Huntley
7 A. Boag
Stroke D. Ormarod
Cox A. Wells

SIXTH EIGHT (M)

Bow H. Addlington
2 J. Williams
3 D. Baker
4 S. Luke
5 P. Beard
6 P. Michadis
7 D. Warling
Stroke A. Brown
Cox M. Grulling
Coach D. Topolski

FIRST EIGHT (W)

Bow C. Jardine
2 M. Branfeld
3 T. Coast
4 A. Musson
5 L. Eburne
6 H. Wenlock
7 H. Ixer
Stroke A. Hambleton
Cox Vanya Chang
Coach S. King

SECOND EIGHT (W)

Bow K. Melhuish
2 S. Candy
3 A. Sidebottom
4 V. Saunders
5 A. Biffett
6 F. Woodward
7 D. Cane
Stroke C. George
Cox Jo Ensor

OXFORD SHIRTPRINTERS

*Victory is just a
T-shirt away!*

**We are the leading suppliers
of printed T-shirts, sweatshirts,
hooded sweats, vests and
long-sleeved T-shirts**

*Call in at our convenient
and friendly shop, just over
Magdalen Bridge*

**53a Cowley Rd,
Oxford 251944**

FIRST EIGHT (W)

Bow Caroline Jenner
2 Corrinna McNally
3 Tara Hudson
4 Helen Burnett
5 Anna Palmer
6 Tonje Vetleseter
7 Harry Heal
Stroke Sarah Swaddling
Cox Karen Westcott
Coach Len Andrews

SECOND EIGHT (W)

Bow Ellen Rowntree
2 Beccy Hearn
3 Charlotte Broadhead
4 Natasha Berrigan
5 Julia Herron
6 Alison Kemp
7 Andy Johnson
Stroke Fran Langdon
Cox Lynn Westcott
Coaches Bri Nichols
Natalie Winant

THIRD EIGHT (W)

Bow Helen Taylor
2 Heather Lynch
3 Ruth Moody
4 Emma Wright
5 Caroline McKenna
6 Tris Moeller
7 Vicky Bailey
Stroke Jo Gill
Cox Liz Astall
Coach Simon Fraser



St. Hilda's College

President
NATALIE WINANT

Boat Club Captain
SARAH SWADDLING

Vice-Captain
CAROLINE JENNER

Treasurer
TARA HUDSON

Secretary
KARMAN GORDON



St. Hugh's College

Boat Club Captain
GILES HELLAWELL

Head Cox
CLARE GREIG

Vice-Captain
DONALD BRECHIN

Ladies' Captain
LIZZIE MELVILLE

Ladies' Vice-Captain
NICKY CHAMBERS

Treasurer
JAMES HOWARD

Secretary
MICHAEL QUAYE

FIRST EIGHT (M)

Bow Michael Quaye
2 Giles Hellowell
3 Richard Clifton
4 Pete Waters
5 Mike Scantlebury
6 Jamie Ord
7 Ed Harley
Stroke Don Brechin
Cox Alex Wright
Coach Mike Kuimelis

SECOND EIGHT (M)

Bow Hugh Johnstone
2 Phil Amor
3 Alex Waite
4 Richard Edwards
5 Jeremy Hyland
6 John O'Malley
7 Gary Pliskin
Stroke James Howard
Cox Tim Roberts
Coach Carrie Wittmer

THIRD EIGHT (M)

Bow Liam Foley
2 Peter Corry
3 Mike Watts
4 Ku-Chin Tu
5 Jon Parkin
6 Stephen Swabey
7 James Urquhart
Stroke Mark Eliashof
Cox Leslie James
Coach Ashley Sharp

FUN VIII (M)

Bow Paul Matthews
2 Jason Grant
3 Adrian Munn
4 Robert Abbott
5 Phil Jones
6 Ian Friggard
7 David Raw
Stroke Daniel Oakley
Cox Mike Richards
Coach Giles Hellowell

SCHOOL'S VIII (M)

Bow Steve Page
2 John Digges
3 Oscar Siennicki
4 Dave Mann
5 Andy Rayment
6 Rupert Recklington
7 Mark Davies
Stroke Mark Latimer
Cox Alex Wright
Coach Stephen Kinder

FIRST EIGHT (W)

Bow Jackie Nash
2 Claire Henderson
3 Jo Patel
4 Melisso Kawecki
5 Katie Stewart
6 Sarah Last
7 Nicky Chambers
Stroke Lizzie Melville
Cox Clare Greig
Coach Luke Howard

SECOND EIGHT (W)

Bow Gillian Powls
2 Susan Griffiths
3 Nicky Barber
4 Chris Palmer
5 Mandy Ford
6 Kirsie Say
7 Abigail Whittle
Stroke Siobhan Crockett
Cox Helen Parfrey
Coach Andy Webb

THIRD EIGHT (W)

Bow Catherine Wood
2 Amanda Loveday
3 Kirstie Arnold
4 Annette Mann
5 Myfanwy Lloyd
6 Shirley Yuen
7 Theresa Daniel
Stroke Jenny Oldridge
Cox Susan Griffiths
Coach Jon Parkin

FOURTH EIGHT (W)

Bow Clare Young
2 Antonia Whitlock
3 Jill Smith
4 Carmel Lackey
5 Helen Wilcock
6 Catriona Tate
7 Caroline Shaw
Stroke Cathy Williams
Cox Hitesh Sanganeer
Coach Mike Scantlebury

FIRST EIGHT (M)
Bow Brian Smith
 2 Tim Martin
 3 James Price
 4 Leslie Lane
 5 Kingsley Poole
 6 Dave Cash
 7 Tom Slocock
Stroke Richard Thorp
Cox Rachel Quarrell
Coach David Lee

SECOND EIGHT (M)
Bow John Hayns
 2 Chris Williams
 3 William Wright
 4 Geoff Pigman
 5 Dan Hulls
 6 Saj Wajed
 7 Mark Adamson
Stroke Ryan Applegate
Cox Christian Schosland
Coaches Tim Martin
 Dave Cash
 Leslie Lane

THIRD EIGHT (M)
Bow Alan Dawson
 2 Oliver Kinsbury
 3 Jason Mann
 4 Owain Morgan
 5 Paul Pattenden
 6 Ben Littler
 7 Peter Niesen
Stroke James Fitzgerald
Cox Frances Richards
Coaches Dan Hulls
 Saj Wajed

FOURTH EIGHT (M)
 "Nodgers"
Bow Simon Jack
 2 Julian Sutton
 3 Ben Edwards
 4 Hugh Ind
 5 Rhys Morgan
 6 Henry Dimbelby
 7 Ed Sharp
Stroke Jon Ibbotson
Cox Pippa Gillan
Coach Not required

FIRST EIGHT (W)
Bow Kirsty Payne
 2 Jo Broadbent
 3 Stephanie Winborn
 4 Rachel Quarrell
 5 Tricia Markusen
 6 Judy Landsberg
 7 Alison Polley
Stroke Natasha Hutchinson
Cox Tamsin O'Connell
Coach Brian Smith

SECOND EIGHT (W)
Bow Clare Oliver
 2 Catherine Jeffry
 3 Sarah Woodhouse
 4 Lauren Taylor
 5 Carol Pinder
 6 Annette Pfeil
 7 Katya Goebbs
Stroke Rebecca Grant
Cox Neil Hindle
Coaches Kirsty Payne
 Dan Hulls
 Tim Martin

THIRD EIGHT (W)
Bow Sarah Driscoll
 2 Shiju Upadhya
 3 Annabelle Bischof
 4 Cathy Gibbon
 5 Joanne Ollerenshaw
 6 Louisa Anderson
 7 Fiona Spiers
Stroke Rachel Ninnis
Cox Carolyn McKee
Coach Tricia Maricusen



St. John's College

Boat Club Captain
LESLIE LANE

Vice-Captain
GEOFF PIGMAN

Ladies' Captain
ROSEMARY PARKINSON

Ladies' Vice-Captain
SOPHIE LANE

Boatman
JIM RONALDSON

Treasurer
BRIAN SMITH

Secretary
NATASHA HUTCHINSON



St Peter's College

Boat Club Captain
JULIAN BATT

Ladies' Captain
HELEN SNELSEN

Ladies' Vice-Captain
ANNA-MARIE GERRARD

Secretary
KEVIN BIBBY

Treasurer
JAMES ANDERSON

FIRST EIGHT (M)

Bow A. Milne
2 T. Bishop
3 K. Bibby
4 R. Simmons
5 J. Anderson
6 I. Gardiner
7 J. Batt
Stroke P. Francis
Cox F. Kerr
Coach A. Weekes

SECOND EIGHT (M)

Bow A. Wiles
2 R. White
3 J. Ellis
4 S. Hodbod
5 A. Enthoven
6 G. Crease
7 M. Cadogan
Stroke A. Buchanan
Cox C. Brown
Coach J. Anderson

THIRD EIGHT (M)

Bow S. Powers
2 J. Elcock
3 G. Middleton
4 B. Guenther
5 D. Churchill
6 M. Crawford
7 R. Warren
Stroke G. Jones
Cox L. Wood
Coach K. Bibby

FOOTBALLERS VIII (M)

Bow H. Dinsdale
2 S. Brownsell
3 G. Voizey
4 I. Evans
5 M. Ramsay
6 P. Dowle
7 K. Ashworth
Stroke R. Edwards
Cox N. Coulson
Coach K. Bibby

FIRST EIGHT (W)

Bow Mika Holkeboer
2 Christina Galbraith
3 Suzanne Ross
4 Jill Stone
5 Anna Hopper
6 Anna-Marie Gerard
7 Helen Snelson
Stroke Gwyn Rees
Cox Mike Higgins
Coaches Dom Neary
Steve Pannett

SECOND EIGHT (W)*

Bow Anna Illingworth
2 Kathy Vernon
3 Tara Glen
4 Gaitlin Collins
5 Becky Willis
6 Gemma Haddon
7 Sarah Phillips
Stroke Ulrike Grünwald
Cox Carol Henderson
Coach Nick Bailey

FIRST EIGHT (M)

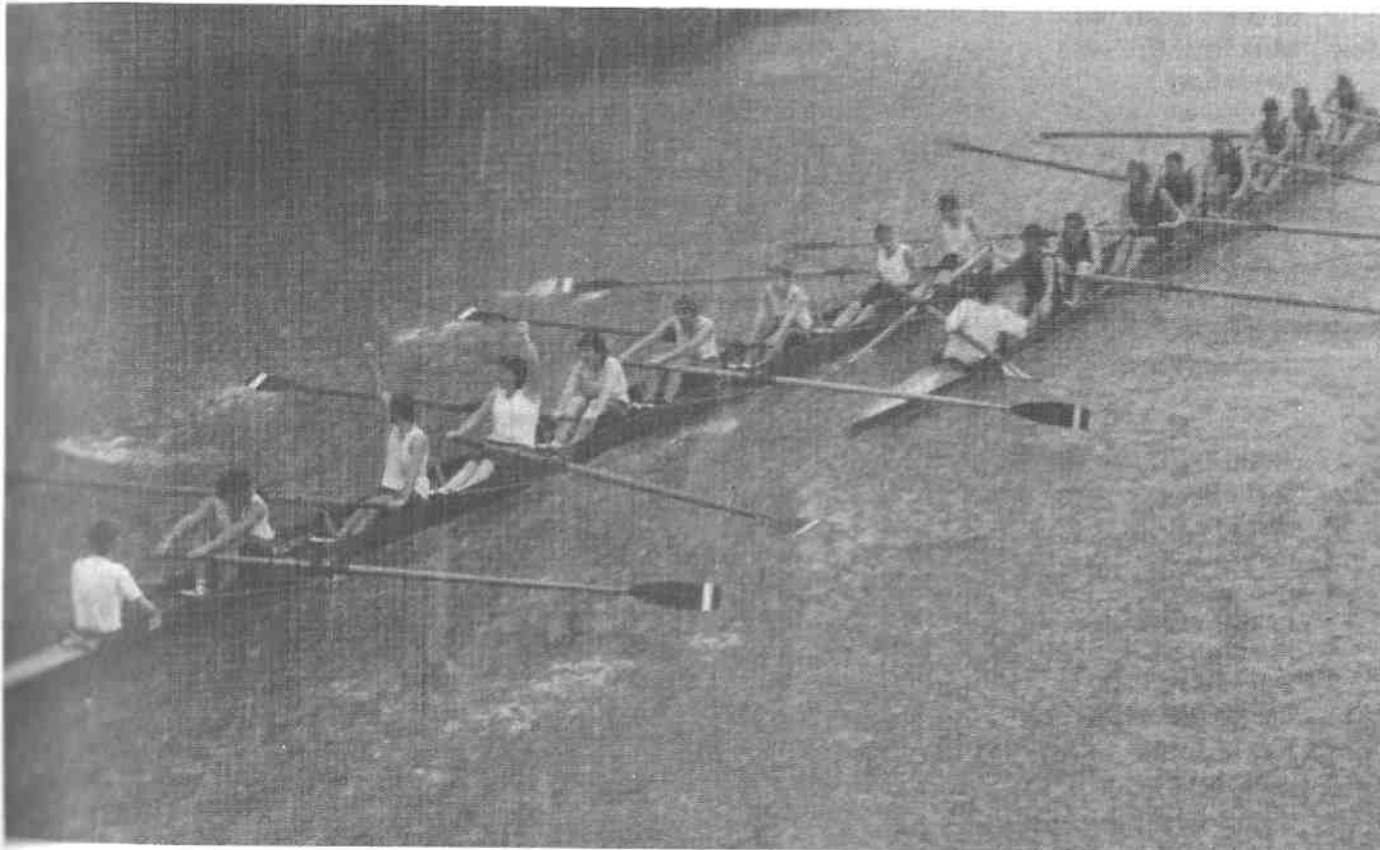
Bow J. Weeks
2 M. Desmidt
3 N. Cox
4 G. Jones
5 J. Lester
6 D. Carney
7 D. Krucik
Stroke T. Royal
Cox H. Newell
Coach S. Hodgkinson



*Templeton
College*

Boat Club Captain
MARC DESMIDT

President
HELEN NEWELL





The Queen's College

Boat Club Captain
JONATHAN PRICE

Vice-Captain
PAUL FLOYD

Boatman
COLIN COX, ESQ

Ladies' Captain
HELEN GOLDSTRAW

Ladies' Vice-Captain
MICHELLE WAIR

Secretary
PAULA BATES

FIRST EIGHT (M)

Bow Eddie Molyneux
2 Matthew Nelson
3 James Conway
4 James Duff
5 Adrian Smith
6 Mark Hindley
7 Paul Floyd
Stroke Jonathan Price
Cox Paula Bates
Coach James Price

SECOND EIGHT (M)

Bow Mark Hawken
2 Angus Gray
3 Lee Craven
4 Justin Savage
5 Gregor Ferguson
6 Stephen Moore
7 Iain Redford
Stroke Seong Sin Han
Cox Martin Hind
Coaches Paul Floyd
Jonathon Price

THIRD EIGHT (M)

Bow Raphael Minder
2 Neil Cole
3 Derek Wright
4 Andy Whiteside
5 Bob Burgess
6 Phil Sanderson
7 Peter Aylett
Stroke Anthony Feltham-White
Cox Eddi Molyneux
Coach Jonathon Price

FIRST EIGHT (W)

Bow Julia Hargreaves
2 Ann-Marie Doe
3 Jacqueline Smith
4 Karen Wilkin
5 Katie Luther
6 Gillian Gracie
7 Wilma Rix
Stroke Helen Goldstraw
Cox Michelle Weir
Coach Adrian Smith

SECOND EIGHT (W)

Bow Leonor Barata
2 Katie Norgrove
3 Jane Poulson
4 Dawn Whittles
5 Joanne Bowlit
6 Helena Rakowski
7 Alex Bellamy
Stroke Sara Norris
Cox Kate Hough
Coaches Derek Wright

FIRST EIGHT (M)

Bow Tom Drew
 2 Ed Blair
 3 Greg Kinzelman
 4 Rob Dinning
 5 David Ashby
 6 Nicholas Blaydes
 7 Jon Scott
Stroke Charles Hammon
Cox Simon Gollowns
Coach Hillary Morris

SECOND EIGHT (M)

Bow Adam Snow
 2 Mark Sadler
 3 Richard Nelhouse
 4 Dave Magliocco
 5 Ian Rodd
 6 Ashley Gething
 7 Dan Mercoith-Jones
Stroke Simon Putt
Cox Jo Saunders
Coaches Chales Hammon
 Nick Blaydes

THIRD EIGHT (M)

Bow Tom Pupe
 2 S. Clarke
 3 Ali Devani
 4 A. Hesford
 5 Matt Tillett
 6 J. Kerslake
 7 D. Tomlinson
Stroke H. van Sceens
Cox H. Forsyth

FIRST EIGHT (W)

Bow Carolyn Hemsley
 2 Heather Smith
 3 Georgia Quenby
 4 Zoe Falk
 5 Clare Wood
 6 Elizabeth Harrison
 7 Alison Fripp
Stroke Lisa Derbyshire
Cox Cathy Bailey
Coaches Karen Clarke
 Andy Beale



Trinity College

Boat Club Captain
CHARLES HAMMON

Ladies' Captain
LISA DERBYSHIRE

President
JONATHON SCOTT

Ladies' President
ALEX WESFORD

Treasurer
NICHOLAS BLAYDES

Secretary
EDMUND BLAIR



University College

President
TRACY BENNETT

Boat Club Captain
MARTIN HUGHES

Vice-Captain
ROB ESNOUF

Coaching Un Co-ordinator
STEWART MacINTOSH

Ladies' Captain
GILLA CARSTAIRS

Ladies' Vice-Captain
RUTH STEELE

Treasurer
GILES ADAM

Secretary
JENNY HOWELLS

FIRST EIGHT (M)

Bow Derrick Pewtrit
2 Miles Behind Eddowes
3 Robot Leland
4 Nick Screotum
5 Rob Phartin
6 Dome Miller
7 James Annon
Stroke Daniel F. Johnson IX
Cox Mark Ross
Coaches Cliff Smedley
Ian Wilson

SECOND EIGHT (M)

Bow Dave Phillips
2 Bruce MacInnes
3 Stuart MacIntosh
4 Justin Wateridge
5 Stuart Clarke
6 Alistair Dorward
7 Iain Courtney
Stroke Rob Esnouf
Cox Giles Adam
Coaches Don Johnson
Rob Martin

THIRD EIGHT (M)

Bow Tien Peng
2 Felix Mayr-Harling
3 James Penner
4 Thomas Krieg
5 Tim Stanley
6 Edward Wattons
7 Mark Gilliam
Stroke Matt Dimond
Cox Laura Bakri
Coach Martin Hughes

FOURTH EIGHT (M)

Bow Neil Wigan
2 Fabrizio Nerola
3 Alex Stewart
4 Will Harwood
5 Hun Maddock
6 Martin Lawless
7 Richard Powley
Stroke Jon Bowers
Cox Alice Vessey
Coach Mike Garvin

FIFTH EIGHT (M)

"Gentlemen's VIII"
Bow Nick "Name" Edgar
2 James "Ow my back" Ginns
3 Big Jim Long
4 Maarten "Enigma" Hajer
5 Classic John Davies
6 Rt. Hon. Dr. Paul Aspinwall
7 Cristian El Conqueror
Sinclair
Stroke Simon "Smithie" Smith
Cox Finlay Clegg
Coach Gilla was going to ...

SIXTH EIGHT (M)

"Geologist VIII"
Bow Moorbath & Bell 1965
2 Clonger
3 Dave
4 Ding Dong
5 The Dean
6 J.D.B.
7 David Bell
Stroke Dr. Bell
Cox Betsy Bell
Coaches James Gonns
Nick Edger

SEVENTH EIGHT (M)

"Novice VIII"
Bow Douglas McNeil
2 Paul McGrath
3 Richard Williams
4 Matteo de Sensi
5 Greg Terentieff
6 Heng Wong
7 Steve Sheppard
Stroke Steve Bibas
Cox Emma Whitton
Coach Michelle Temple

FIRST EIGHT (W)

Bow Sarah Shorten
 2 Andrea Seymour
 3 Jenny Howells
 4 Caroly Elliss
 5 Sarah Crampton
 6 Gilla Carstairs
 7 Tracy Bennett
Stroke Mary Web
Cox Louise Cole
Coaches Derek Thurgood
 Don Miller
 Derrick Pitard

SECOND EIGHT (W)

Bow Kirsten Tedder
 2 Roselle Urion
 3 Chilton Weerhle
 4 Ruth Platt
 5 Natasha Dames
 6 Myfanwy Lewis
 7 Anna Stephen
 8 Judith Ellison
Cox Mark Urquart
Coach Christian Sinclair

THIRD EIGHT (W)

Bow Sophie Martin
 2 Chris Burke
 3 Helen Griffiths
 4 Julianna Priwitzter
 5 Sonja Thein
 6 Claire Horisk
 7 Louise Allen
Stroke Chandy Chima
Cox Dave Nelson
Coaches Ruth Steele
 Anna Stephen

FOURTH EIGHT (W)

"Novice VIII"
Bow Awenna Williams
 2 Jennifer Ditord
 3 Vivien Reynolds
 4 Shireen Shaikh
 5 Kate Vaughan-Neil
 6 Kathryn Reynolds
 7 Susan Young
 8 Rebecca Davis
Cox Aarif Hilaly
Coaches Stewart MacIntosh
 Finlay Clegg

FIFTH EIGHT (W)

"Schools VIII"
Bow Rachel Ingleby
 2 Maria Christina
 3 Claire Johnston
 4 Jenny Stuart
 5 Ruth Steele
 6 Andrea Henry
 7 Suzie Bowden
 8 Penny Vogler
Cox Fiona Galton-Fenzi
Coach Stuart Clarke



University College

President
TRACY BENNETT

Boat Club Captain
MARTIN HUGHES

Vice-Captain
ROB ESNOUF

Coaching Un Co-ordinator
STEWART MacINTOSH

Ladies' Captain
GILLA CARSTAIRS

Ladies' Vice-Captain
RUTH STEELE

Treasurer
GILES ADAM

Secretary
JENNY HOWELLS

MANAGEMENT CONSULTANCY Take off with Andersen Consulting



To ensure your career takes off
we fly you to Chicago

Within a month of joining Andersen Consulting, all our new graduates find themselves heading for Chicago and a 3-week spell at our International Training and Development Centre.

This is just the start of an intensive technical, business and managerial

training programme that's calculated to build the blend of IT and entrepreneurial skills that are so essential in management consultancy. Talents that could open up genuine prospects of partnership in your early 30's.

To ensure your career takes off in the right direction, please contact:

Simon Rickman,
Andersen Consulting,
2 Arundel Street, London WC2R 3LT.

ANDERSEN
CONSULTING
ARTHUR ANDERSEN & CO. INC.

FIRST EIGHT (M)
Bow Rupert Lewis
 2 Andrew Merrill
 3 Oliver Jones
 4 Jon Phillips
 5 Tucker Shaw
 6 David Caplan
 7 James Fowler
Stroke Nick Bullock
Cox Jancyn Nelson
Coach Philip Rowley

SECOND EIGHT (M)
Bow Christian Dickson
 2 Simon Clemett
 3 Bryan Gibb
 4 Gareth Boyd
 5 Anthony Kyle
 6 Jeff Papps
 7 Jonathan Snary
Stroke Clayton Brock
Cox David Garvie
Coach Carole-Ann Tucker

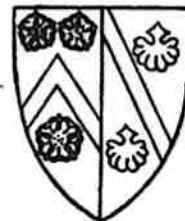
THIRD EIGHT (M)
Bow Ben Williams
 2 Woon Wong
 3 Rob Emkinson
 4 Thomas von Schoeler
 5 Bob Waine
 6 James Horns
 7 Andrew Collard
Stroke Ian Tompkins
Cox Pete Ford
Coach Phil Smyth

FOURTH EIGHT (M)
Bow Paul Morgan
 2 William Stanbury
 3 Phil Smyth
 4 Mike Collette
 5 Neil Whittaker
 6 Simon Jackson
 7 James Banister
Stroke Adrian Whittington
Cox Jill Brown

FIRST EIGHT (W)
Bow Kate Smith
 2 Sharon Mascall
 3 Jo Dixon
 4 Angela van den Berg
 5 Carole-Ann Tuer
 6 Jenny Jones
 7 Helen Byrne
Stroke Krishne Max
Cox Bryan Cole
Coach Rod Andrews

SECOND EIGHT (W)
Bow April Foreman
 2 Claudia Carrington
 3 Sybil O'Malley
 4 Alison Daniel
 5 Becky Pollard
 6 Kris Schnepf
 7 Maureen Kingston
Stroke Juliana McIntyre
Cox Bernadette Neiston
Coaches Rupert Lewis
 Bryan Cole

THIRD EIGHT (W)
Bow Julia Powles
 2 Elizabeth Östemeyer
 3 Manzke von Ekris
 4 Kate Epton
 5 Kate Mayberry
 6 Anna Souhami
 7 Karen Kaczynski
Stroke Nana Flemington
Cox Zia Jafn
Coaches Jenny Jones
 Diana Blease



Wadham College

Boat Club Captain
ADRIAN WHITTINGTON

Ladies' Captain
CAROLE-ANN TUER

President
PAUL ROLLES

Ladies' President
HELEN BYME

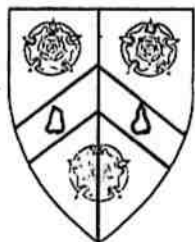
Ladies' President
JEREMY GOULDEN

Treasurer
RUPERT LEWIS

Secretary
SIMON JACKSON

Barjee
NICK BULLOCK
& JAMES FOWLER

Gardener,
MIKE COLLENETE



Wolfson College

Captain of Boats
SUSAN R. ERB

Men's Captain of Boats
MIKE WOODIN

Women's Captain of Boats
SUSAN R. ERB

Secretary
ANGELA COXON

Treasurer
LIZ BRADSHAW

Equipment Officer
ANTONY SIMMINS

Member at Large
JAMES PFEFFER

Honorary Bargee
PAMELA SANSOM

FIRST EIGHT (M)

Bow C. Marsh
2 E. Thorogood
3 M. Thorrup
4 B. Kirsch
5 J. Bass
6 J. Jowett
7 G. Crocker
Stroke D. Langslow
Cox M. Daen
Coach L. Olsen

SECOND EIGHT (M)

Bow C. Carter
2 A. Simmins
3 N. Wakeman
4 C. Brocklehurst
5 M. Woodin
6 A. Moore
7 F. Wagner
Stroke M. Stiff
Cox K. Downing
Coach M. Dunning

THIRD EIGHT (M)

Bow T. Hjelm
2 J. Knall
3 M. Isles
4 R. Payne
5 R. Mather
6 P. MacDonald
7 N. Argenti
Stroke S. Sardo-Infirri
Cox S. Barry
Coach A. Simmins

FOURTH EIGHT (M)

Bow R. Bell
2 P. Hallam-Baker
3 L. Kaklamanis
4 J. Robertson
5 S. Trowell
6 M. Sutton
7 W. Gerrit-Fruh
Stroke M. Peters
Cox P. Sansom
Coach J. Pfeffer

FIFTH EIGHT (M)

Bow L. Movement
2 Otto Handel
3 D. Greeze
4 P. Lay
5 X.A. Knight
6 A. Peal
7 T.V.I. Trombones
Stroke M.Y. Botham
Cox I.X. Payne
Coach N. Orsiz

FIRST EIGHT (W)

Bow G. Parkhill
2 L. Boston
3 A. Ulrich
4 J. Forward
5 P. Sansom
6 S. Erb
7 A. Manning
Stroke T. Scaysbrook
Cox J. Pfeffer
Coaches P. Gardner
G. Crocker

SECOND EIGHT (W)

Bow A. Pierpegardes
2 M. Morse
3 H. Lawton-Smith
4 J. Pullen
5 J. Leatherby
6 K. Whittaker
7 A. Coxon
Stroke J. Fritts
Cox A. Whittingham
Coach M. Dunning

FIRST EIGHT (M)
Bow Phil Clamp
 2 Charlie Rodway
 3 Jon Golub
 4 Nick Hughes
 5 Phil Parker
 6 Ian Harding
 7 Mark Anderson
Stroke Nick Pimlott
Cox Reen Jishi
Coach Steve Walker

SECOND EIGHT (M)
Bow Bob Draper
 2 Richard Waterhouse
 3 Dave Griffin
 4 Nigel Tomlinson
 5 Larry Bush
 6 Steve Campbell
 7 Tim Carty
Stroke D. Shaharudin
Cox Estee Torok
Coach Nick Ferguson

THIRD EIGHT (M)
Bow A. Jones
 2 B. Smythe
 3 C. Jones
 4 D. Smythe
 5 E. Jones
 6 F. Smythe
 7 G. Jones
Stroke H. Smythe
Cox I. Jones

FOURTH EIGHT (M)
Bow Roxby Hartley
 2 Ian Crosbie
 3 George Follows
 4 Bimbo Ferguson
 5 N."O". W. Walker
 6 Simon Cryer
 7 Al Smith
Stroke Drew Erdman
Cox Katerine Oswald

FIFTH EIGHT (M)
Bow Helen Sparrow
 2 Jerry Dugdale
 3 John Smith
 4 Andy Blacksell
 5 Sam Okoli
 6 Pete Pender-Cudlep
 7 Stephen Street
Stroke Bruce Lee
Cox Chris Knight
Coach Wendy Herring

FIRST EIGHT (W)
Bow Helen Gordon-Lee
 2 Reem Jishi
 3 Helen Cook
 4 Rachel Robins
 5 Suna Erdem
 6 Sarah Hall
 7 Pippa Johnson
Stroke Alex Stubbs
Cox Viv Thomerson
Coach Mark Hindley

SECOND EIGHT (W)
Bow Ellie Hughes
 2 Rebecca Trentham
 3 Sandra Strauss
 4 Pheobe King
 5 Claire Simper
 6 Vanessa Curran
 7 Liz Barlow
Stroke Jenny McLintoch
Cox Wendy Herring
Coaches Amanda Lockhart
 Chris Knight

THIRD EIGHT (W)
Bow Judith Schoss
 2 Sophie Littlejohn
 3 Ros Gough
 4 Plum Sykes
 5 Annie Heaton
 6 Chris Knight
 7 Yasmin Nasar
Stroke Amanda Lockhart
Cox Katie Collins
Coach Phil Clamp



Worcester College

Boat Club Captain
ALEX STUBBS

Men's Captain
MARK ANDERSON

Vice-Captain
KATHERINE OSWALD

Ladies' Vice-Captain
VIV THOMERSON

Boatman
RON COUSINS

Treasurer
IAN HARDING

Secretary
HELEN GORDON-LEE

Fixtures Secretary
NICK PIMLOTT



A SPIRITED EIGHT

BEEFEATER
GIN[®]

PROUD SPONSOR OF THE OXFORD & CAMBRIDGE UNIVERSITY BOAT RACE



Oriel Summer Eight 1989

Bow A Borer (King's College London); 2 AP McNally (King's College London);
3 DK Lyons (US Naval Academy); 4 JJC Leyne (Lea); 5 TG Dillon (King's College London)*;
6 JJ Whitting (King Edward VI School, Stratford); 7 GB Blanchard (KCS Wimbledon);
Stroke RA Hull (Robinson College Cambridge); *Cox* GS Radcliffe (Downing Coll. Cambridge)

* Replaced by S Crawford-Collins (Westminster) Friday & Saturday

Guide to Oxford Blades



Pembroke



Queen's



Regent's Park



Somerville



St. Anne's



St. Benet's Hall



St. Catherine's



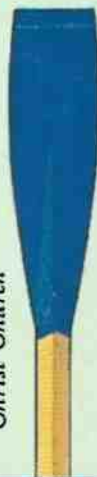
St. Hilda's



Balliol



Brasenose



Christ Church



Corpus Christi



Exeter



Hertford



Jesus



Keble